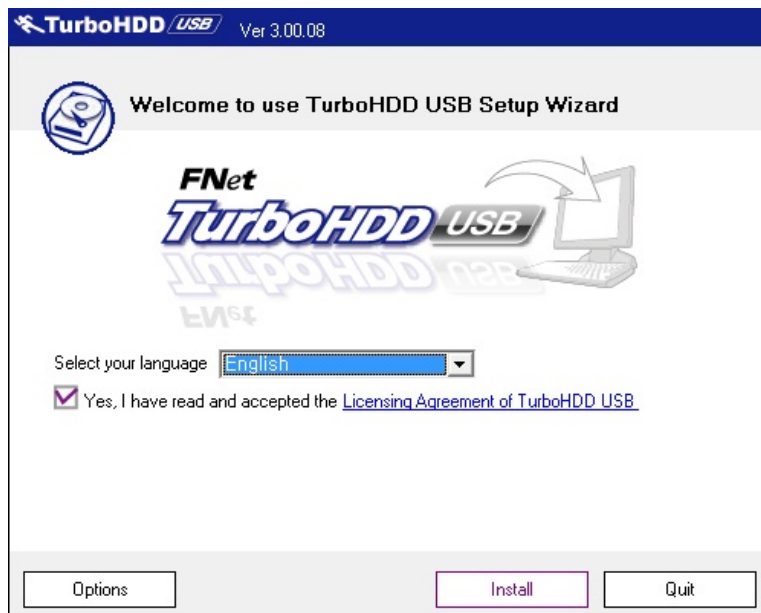


# USB 3.0 Turbo Mode Program

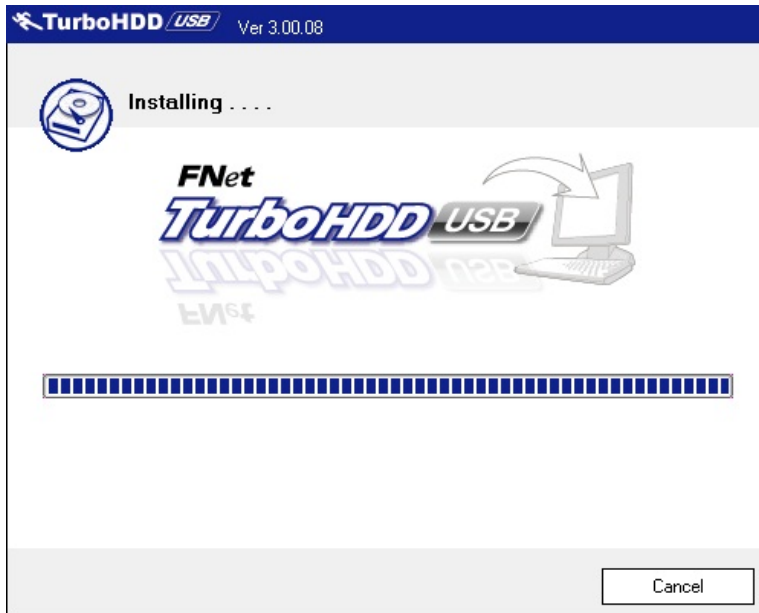
## USB 3.0 Normal mode vs. Turbo mode

The performance of the USB 3.0 can improve using Turbo Mode with TurboHDD USB program. The TurboHDD USB program can enable or disable the turbo mode function. The turbo mode only improves the performance and does not affect the data saved. Please note that the turbo mode only available in Windows, and only activated when the program installed. To install the program:

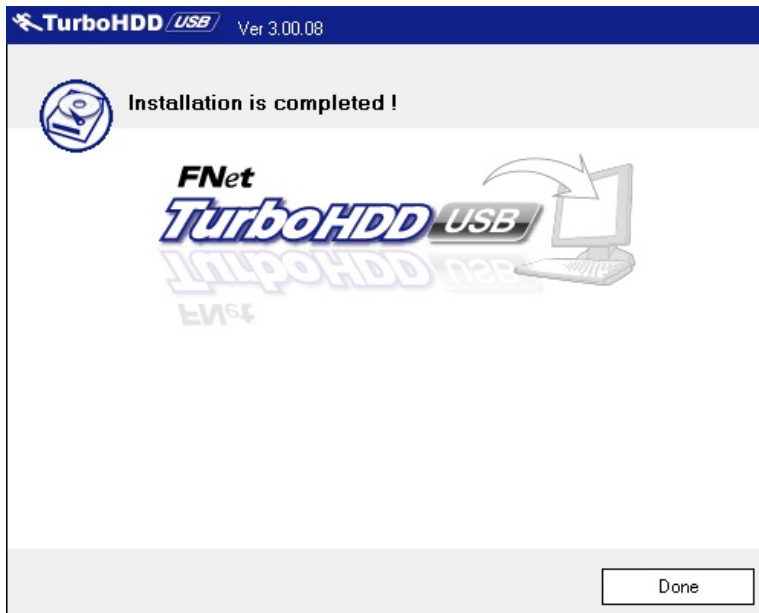
1. The program is located in the folder: *CD-ROM:\driver\USB 3.0 Turbo\*
2. Open the folder and double click the "Setup"
3. Accept the licensing agreement by checking the check box, and click install:



4. The installation process will start:



5. Click Done when finished.



6. To enable or disable the Turbo Mode, click on the icon on the desktop:



7. The default setting is in Normal Mode. To switch to Turbo Mode, click on the hard drive logo, or the word "Turbo", the enclosure will be operated in the Turbo Mode. To switch back to Normal mode, click on the hard drive logo or the word "Normal"

