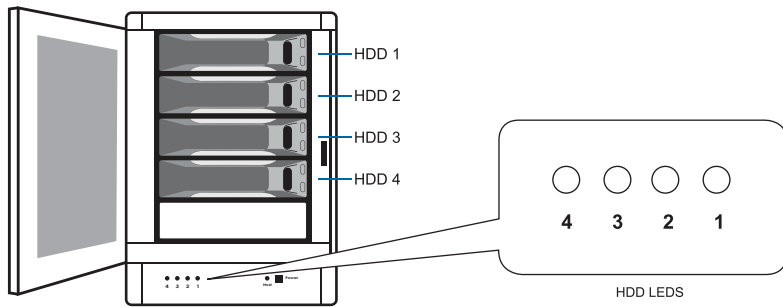


## LED Indicators

Hard drive data access LEDs are located on the bottom of the front panel. The LEDs flash green depending on the hard drive being accessed.



## SAS/SATA Hard Drive Support

The TowerRAID SAS unit supports both SAS and SATA hard drives with SAS or SATA controllers. SAS hard drives are supported via SAS host bus adapters (HBA) or RAID controllers. SATA drives are supported via both SAS and SATA host bus adapters (HBA) or RAID controllers. No setting changes are necessary on the TowerRAID unit.

## HBA & RAID Controller Card Options

Host bus adapter or RAID controller card bundle options are available. A SAS or SATA host bus adapter allows mini-SAS connection to the host computer where RAID could be setup via computer software. A RAID controller card offloads RAID calculation from computer to a dedicated RAID engines on the card, known as hardware RAID, allowing a faster performance. Please contact Sans Digital for controller card compatibility.

**SANS**  
DIGITAL



# TOWERRAID TR4X6G

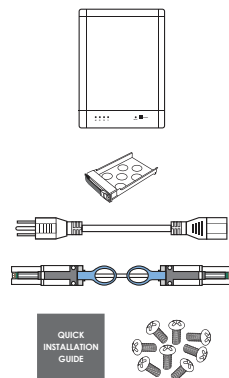
4 BAY SATA / SAS to SAS 6G

QUICK INSTALLATION GUIDE v1.0

## Package Contents

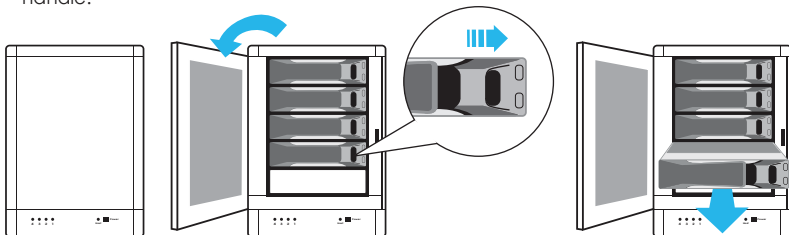
Item	Quantity
TR4X6G .....	1
Removable Tray .....	4
Power cord .....	1
Mini-SAS (SFF-8088) cable .....	1
Screws .....	1 set
Quick Installation Guide .....	1

Please contact Sans Digital for missing or damaged items.



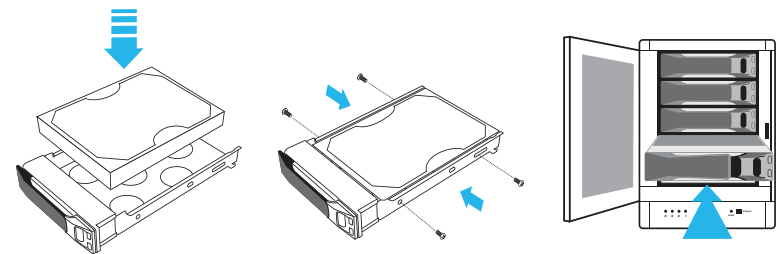
## Hard Drive Installation

1. Open the front hard drive panel of the unit.
2. Remove the hard drive trays by pushing the tray tab to the right and releasing the tray handle.

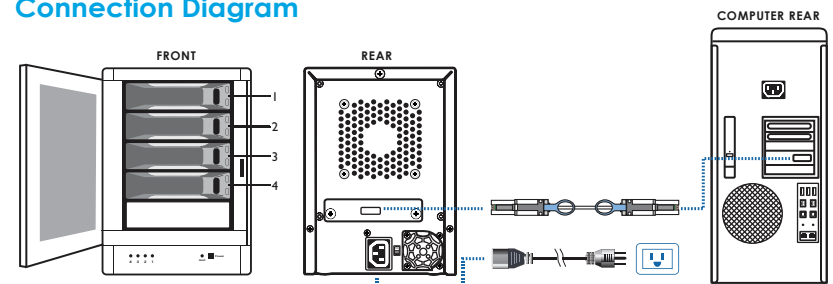


## Hard Drive Installation (Continued)

3. Install each hard drive by placing them into the hard drive trays and securing them on both sides with the included screws.
4. Place the trays back into the unit and lock them in place by pushing the tray handles in.
5. Close the front hard drive panel.



## Connection Diagram



**Power ON/OFF:** Push the power button located on the front panel to power on/off the unit.