

# SANS DIGITAL | TOWERRAID TR4M+BNC

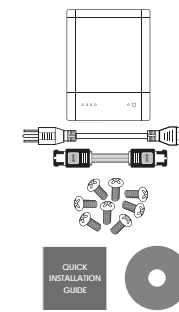


QUICK INSTALLATION GUIDE v1.0

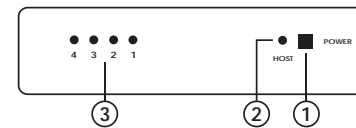
## Package Contents

Item	Quantity
TR4M-BNC .....	1
Power cord .....	1
eSATA cable .....	1
Screws .....	1 set
Quick Installation Guide .....	1
CD Manual .....	1

Please contact Sans Digital in case of any missing or damaged items.



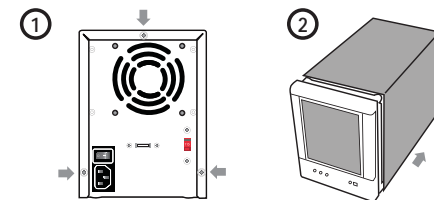
## LED Indicators



1. **Power LED** - Lights when unit is powered on.
2. **PC Link LED** - Lights when unit is connected to computer.
3. **HDD LEDs** - Green: HDD is installed. Orange: HDD is being accessed.

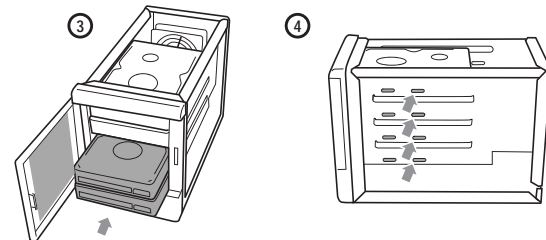
## Hard Drive Installation

1. Remove the tool-less screws on the back panel.
2. Remove the upper chassis cover backwards and lift it upwards.



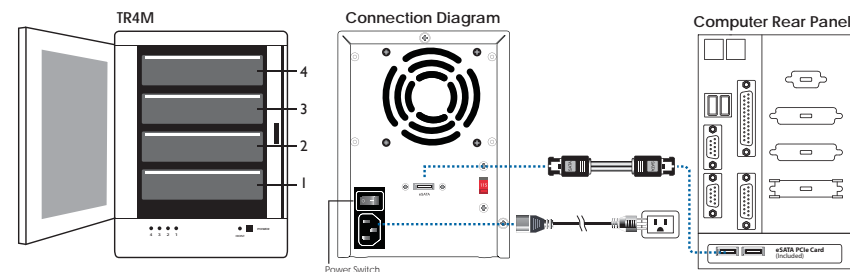
## Hard Drive Installation (Continued)

3. Open the front panel and install the HDDs from the top to the bottom.
4. Fasten the tool-less screws to secure the hard drives.



5. Close the front panel and the chassis cover, and fasten the tool-less screws on the back panel.

## Hardware Connection Diagram



- Power ON/OFF: Switch the power button located in the back to power on/off.

NOTE: Port multiplier is required for detecting all 4 drives. If the computer does not have PM, only drive #1 will be detected. Optional port multiplier card is available. Please visit [www.sansdigital.com](http://www.sansdigital.com).

## Other Sans Digital Products



HDDRACK5

- **5-Bay IDE / SATA Hard Drive Organizing Rack**
- Designed with a 4.7" cooling fan and a hollow aluminum frame for efficient heat dissipation.
- Designed with an ON/OFF power switch, which controls the power of hard drives, when a 20-pin or 24-pin ATX power supply is connected.
- Expandable to 10-bay by stacking an additional unit on top and securing it with a tool-less screw.



TR4UT+B / TR4UT+

- **4-Bay External RAID Enclosure**
- Access 4 hard drives while using only one cable.
- Hardware RAID 0, 1, 1+0, 3, 5 and CLONE with hot spare.
- USB 3.0 and eSATA host interfaces, supporting PC, Mac and Linux.
- Bundled with R622 2-port PCIe 2.0 x1 eSATA 6G controller card. Over 200MB/s in RAID 5 performance
- Available in black and silver finish.



TR5UT+B / TR5UT+

- **5-Bay External RAID Enclosure**
- Access 5 hard drives while using only one cable.
- Hardware RAID 0, 1, 1+0, 3, 5 and CLONE with hot spare.
- USB 3.0 and eSATA host interfaces, supporting PC, Mac and Linux.
- Bundled with R622 2-port PCIe 2.0 x1 eSATA 6G controller card. Over 200MB/s in RAID 5 performance
- Available in black and silver finish.



TR8M+B / TR8M+

- **8-Bay External RAID Enclosure**
- Two eSATA cables supporting up to 8 hard drives using Port Multiplier.
- Provides RAID 5 protection with over 200MB/s in performance.
- supports JBOD and RAID modes on Linux, MAC and Windows; supporting Windows 7 and Snow Leopard.
- Bundled with dual-port eSATA 6Gb/s PCIe 2.0 x1 RAID controller card.
- Available in black and silver finish.

T: 1.800.980.1988 F: 1.626.322.3878 E: [INFO@SANSDIGITAL.COM](mailto:INFO@SANSDIGITAL.COM) W: [WWW.SANSDIGITAL.COM](http://WWW.SANSDIGITAL.COM)