



2 Bay USB Type C to SATA RAID Enclosure

Model : MR2UT6G

User Manual

1. CONTENT

- 2Bay 3.5 Inch Hard Drive RAID Storage
- USB 3.0 Cable
- Mounting screws and screw driver
- User Manual
- 12V power Supply

2. OS Support

Windows 2000/ Me/ XP / Vista/ 7/ 8/ 8.1/10 and above, Mac OS 9.1/10 and Linux

3. CONNECTING HDD



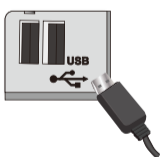
MR2UT6G



Pull out the hard drive from the unit



Install the hard drives into the trays and put it back to the unit



Connect the USB cable to the computer



Connect the USB Type C connector to the unit



Connect the power connector from the power adapter, and plug the power adapter to the power source



Select the RAID mode when power is off. Power on the unit while holding down the reset button for 5 seconds

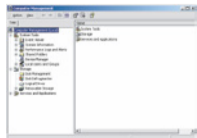
NOTE:

Please follow below information on how to partition and format the drives before use

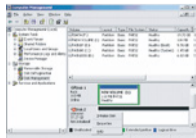
NOTE:

Data will be lost when you reset the unit

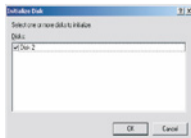
4. Partition and Format



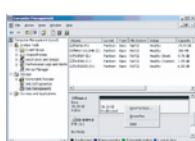
1. Right click on "My Computer" icon and select "Manage". When this window appears, select "Disk Management".



2. Right click on the disk on "New Volume" and select "Initialize Disk".



3. Select the new disk to start with the configuration.



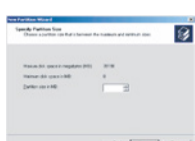
4. When new disk appears, right click on it and select "New partition".



5. When the wizard window appears, click on [Next].



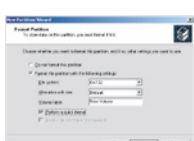
6. Select "Primary Partition" and click on [Next].



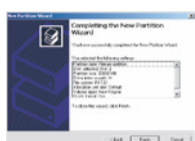
7. Select the partition size We recommend to use as maximum and click on [Next].



8. Select the drive letter to assign the hard disk and click on [Next].



9. Select the format settings : "FAT 32", "DEFAULT" and Volume Label and "Perform a quick format".



10. Your hard disk is complete and your hard disk is ready to use. Click on [Finish].

5.Product Specifications

| Product Specification |

RAID Level	RAID 0, RAID 1, JBOD, Spanning
HDD Supported	Supports 2.5/3.5 inch SATA HDDs and SSDs
Cooling Fan	70mm Cooling Fan
Interface	USB 3.1 Type-C (Backward Compatible to USB 3.0)
Max. Transfer Rate	10Gb/s
OS Support	Windows 2000 or above, MAC OS 10.3 or above, and Linux
Power Adapter	12V 36W Power Adapter
Enclosure	Extruded Aluminum Case
Package Contents	MR2UT6G unit, USB Type-C to Type-C Cable, USB Type-C to Type-A Cable, Screws and Screws-Driver, Power Adapter and User Manual.
Weight and Dimension	8.4in x 4.6in x 5.3in, 8lb (without HDDs)
Note	Hard Drives is not included

2 Bay USB Type C to SATA RAID Enclosure

- USB 3.1 Type-C to SATA Enclosure
- Support 2.5/3.5 inch Hard Drive
- Support Auto Rebuild in RAID 1 Mirror Mode
- USB 3.1 Gen2 Type-C Supported, Backward Compatible to USB 3.0
- Convenient Tool-less Design
- Supports Windows 2000 or above, MAC OS 10.3 or above, and Linux
- Support over 2TB Hard Drives

7.Feature



1. RAID Level : RAID 0, RAID 1, JBOD, Spanning
2. USB 3.1 Type-C (Backward Compatible to USB 3.0)
3. DC IN : 12V power supply
4. Cooling Fan : 7cm Fan
5. OS Support : Windows 2000 or above, MAC OS 10.3 or above, and Linux

8.RAID Level Setting



JBOD Mode
 * Each works as a single hard disk, and the data is transferred individually to each hard drives.
 * Switch 1 and 2 are off.(Both Switch 1 & 2 are up.)



RAID 1 Mode
 * RAID 1 mode (Mirroring) will provide RAID 1 protection against HDD failure
 * Switch 1 is off and Switch 2 is on(Switch 1 up & Switch 2 down)



RAID 0 Mode
 * RAID 0 mode (Striping) provides best performance,combining both drives for read/write to both drives.
 * Switch 1 is on and Switch 2 is off(Switch 1 down & Switch 2 up).



Spanning Mode
 * Spanning mode join both hard drives capacity to provide a large volume.
 No performance or redundancy in this mode.
 * Both Switch 1 & 2 are on (Both Switch 1 & 2 are down).