

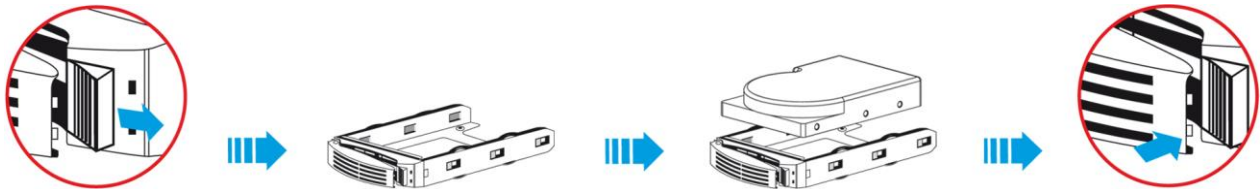
# EliteSTOR ES212X12 Quick Installation Guide

Overview: Sans Digital EliteSTOR 12G SAS expander series is a storage rackmount enclosure with 12G SAS expander build-in to the unit. Using with 12G SAS host bus adapter (HBA) or 12G SAS RAID controller, Sans Digital EliteSTOR 12G SAS expander series can easily upgrade your storage infrastructure's performance and instantly increase your storage sizes.

In this quick installation guide, it will cover the hard drive installation, product connection diagram, and basic enclosure information and status LED information

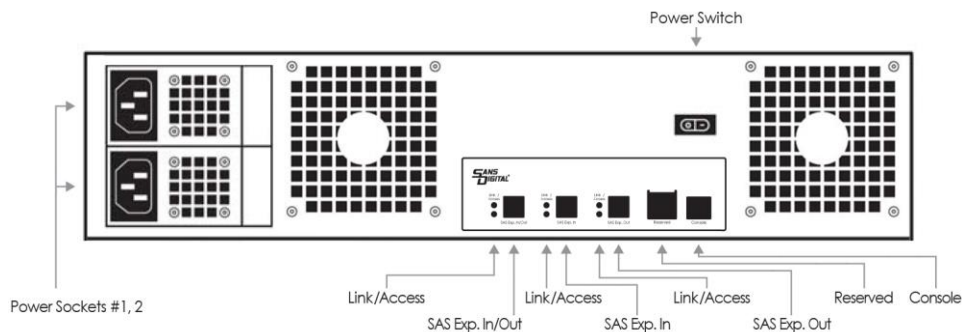
## Hard Drive Installation

1. Push the Blue button on the right-side of the hard drive tray to the left releasing the hard drive tray handle.
2. Pull on the tray handle to remove the tray from the enclosure.
3. Place a hard drive into the tray and line it up with the holes on the hard drive tray.
4. Fasten the hard drive to the tray using the provide screws and a Philips screw driver.
5. Place the tray back into the enclosure and lock the tray by pushing in the tray handle until it clicks into place.

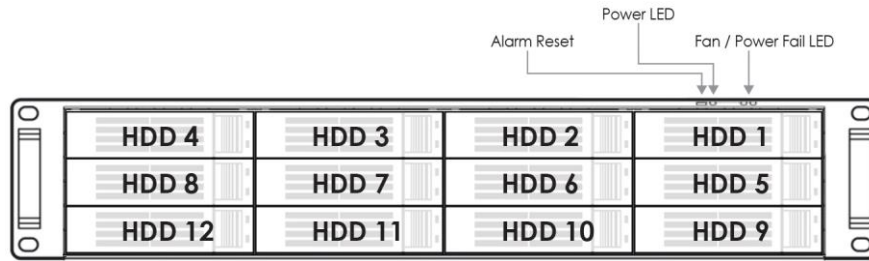


## Product Diagram

### Unit Backplane

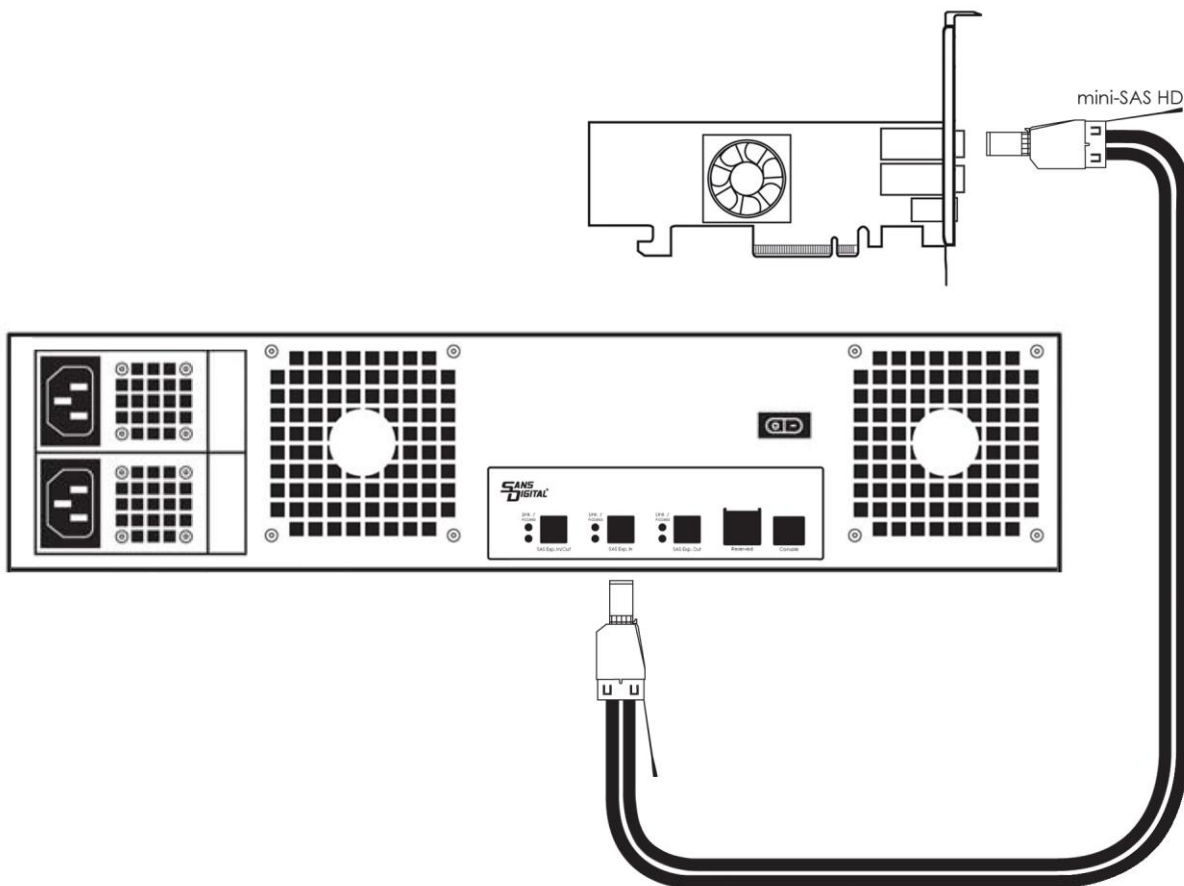


### Hard Drive Locations



## **Installation Diagram**

1. *Install the PCIe RAID card or HBA into an available PCIe slot on the host computer.*
2. *Connect the mini-SAS HD cable into port of the PCIe RAID card's SAS port.*
3. *Attached the other end of the mini-SAS HD cable into the Sans Digital SAS enclosure mini-SAS HD port.*
4. *Power on the SAS enclosure then power on the host computer.*
5. *Wait for the host computer to boot and follow the RAID controller instructions to install the drivers and RAID management software.*
6. *The connected hard drives will display under RAID controller's management interface, or disk management/utilities for HBA cards.*



## **Drive LED information (Hard Drive Tray)**

[www.sansdigital.com](http://www.sansdigital.com) | [info@sansdigital.com](mailto:info@sansdigital.com) | phone 800 980 1988 | fax 626 322 3878





HDD Installed & Detected (Blue)

| Description          | LED Indication |
|----------------------|----------------|
| Accessing Hard Drive | Blinking Green |
| Hard Drive Fail      | Red            |

### **Redundant Power Supply (Standard for ES212X12, ES316X12, ES424X12, optional for ES208X12)**

The redundant power supply feature consists of hot-swappable power supply modules. If one of the power modules fails, the remaining working power supply modules will continue to provide power to the unit so users do not experience downtime. A replacement power supply could be installed while the unit is running. Once the replacement power has been installed, the unit will regain its redundant power feature.

**Note:** Power must be supplied to all power supply modules in order for redundant feature to operate correctly.

### **Fan/Power Fail LED information (Front Panel)**

When the power supply modules or internal cooling fan malfunctions, the front fail LED will blink and the alarm will go off. Please see table below:

| Description          | Alarm Buzzer                  | Fail LED     |
|----------------------|-------------------------------|--------------|
| Power Supply Failure | Always On                     | Blinking Red |
| Cooling Fan Failure  | Beep with one second interval | Blinking Red |

**Note:** Pressing down the 'Alarm Reset' button temporarily silences the alarm. Alarm will start buzzing again once the unit has been restarted.