

QUICK INSTALLATION GUIDE - V 1.0

### (1) Specifications

Application	<ul style="list-style-type: none"> <li>• 3.5" SATA-I or SATA-II hard drive</li> <li>• 1.5Gb/s or 3.0Gb/s</li> <li>• 20GB - 2TB</li> </ul>
Interface/Ports *	<ul style="list-style-type: none"> <li>• eSATA</li> <li>• FireWire 800</li> <li>• FireWire 400</li> <li>• USB 2.0 High Speed</li> </ul>
Data Transfer *	<ul style="list-style-type: none"> <li>• eSATA up to 3.0Gbps (300MB/s)</li> <li>• FireWire 800 up to 800Mbps (100MB/s)</li> <li>• FireWire 400 up to 400Mbps (50MB/s)</li> <li>• USB 2.0 up to 480Mbps (60MB/s)</li> <li>• USB 1.1 up to 12Mbps (1.5MB/s)</li> </ul>
System Requirements (PC)	<ul style="list-style-type: none"> <li>• eSATA: Windows XP/Vista</li> <li>• FireWire 800: Windows XP/Vista</li> <li>• FireWire 400: Windows XP/Vista</li> <li>• USB 2.0: Windows XP/Vista</li> </ul>
System Requirements (Mac)	<ul style="list-style-type: none"> <li>• eSATA: Mac OS 10.4 or higher</li> <li>• FireWire 800: Mac OS 10.2 or higher</li> <li>• FireWire 400: Mac OS 10.1.5 or higher</li> <li>• USB 2.0: Mac OS 10.2 or higher</li> </ul>
Operating Environment	<ul style="list-style-type: none"> <li>• Temperature: 5°C ~ 40°C</li> <li>• Humidity: 10%RH ~ 80%RH</li> </ul>
Storage Environment	<ul style="list-style-type: none"> <li>• Temperature: -20°C ~ 70°C</li> <li>• Humidity: 5%RH ~ 90%RH</li> </ul>
Power Supply	Input: AC 100-240V Output: DC +12V/2A or +12V/2A, +5V/2A
Enclosure Size	19.3cm or 22.2cm x 11.4cm x 3.9cm

\* Available interfaces and data transfer speeds depend on the model.

### (2) Detailed View

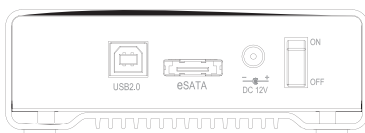
LED indicator behind front panel:

OFF = Power OFF

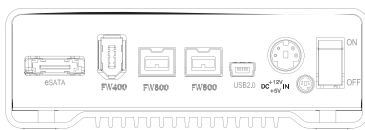
Solid Blue = Power ON, status ready

Flashing Blue = Power ON, read/write access

TS1UT



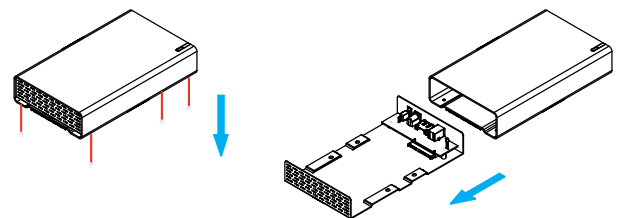
TS1CT



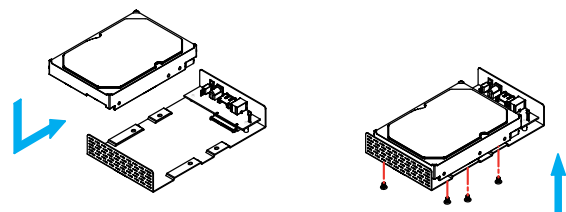
Note: The available interfaces depend on the model you have purchased.

### (3) Hard Drive Assembly

a) Remove the 4 screws located at the bottom of the case and pull out the HDD chassis from the enclosure.



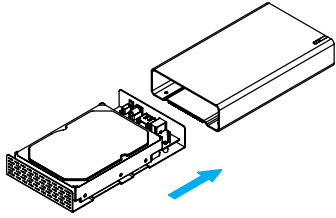
b) Install the hard drive, connect the SATA and power cable (TowerSTOR TS1CT only) and mount the drive with the four screws from the bottom.



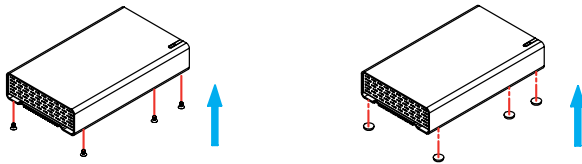
Note: Your unit may come with a pre-installed hard drive. Before opening your enclosure, please read the warranty carefully, as this could void it.

## (4) Enclosure Assembly

- a) Slide the assembled drive back into the enclosure but be careful not to damage any of the components.



- b) Fasten the 4 screws at the bottom of the casing to finish the assembly. Next, peel off the paper from the back of the self-adhesive rubber feet. Now, place the rubber feet over the screws and stick them on the casing to cover the screws.



*Note: Be careful not to damage any components when installing the HDD!*

## (5) System Set Up

If the drive has been pre-installed and setup already, you do not need to prepare anything else and can use it straight out of the box.

If you have installed the drive yourself and this is a brand new HDD, you will have to create a partition first and format the drive before it is recognised by the computer.

- Turn on your computer and start the system.
- Plug-in the external power supply, connect the TS1UT/TS1CT to the computer and turn on the power.
- The system will automatically mount the drive and you can access it under My Computer for the PC or on your desktop for the Mac.
- If the drive does not show up, make sure it has sufficient power and then use the Disk Management tool on the PC or the Disk Utility on the Mac to prepare and format the drive. Be aware that formatting the drive will erase all existing data!
- For the safe removal of your drive and to assure that no data is lost, always eject the external drive from your system first, before you turn it off.

*Note: When not in use for longer periods of time, it is recommended to turn off the device and unplug the power supply.*

## (6) Safety Information

### 6-pin FireWire cable

When using a 6-pin FireWire cable, make sure NOT to insert the connector the wrong way (upside down), or you will damage the device!

### Location and placing precautions

Do not cover the TS1UT/TS1CT and do not place the unit on other heat-sensitive equipment. Avoid positioning it in the following places:

- Locations with direct sunlight, next to radiators or other sources of heat with high temperatures (more than 35°C) or high humidity (more than 90%).
- Locations subject to vibration, shock, or with a slope.
- Do not expose the product to water or humid conditions.

### Electricity and power plug

Careful attention must be paid to the following points in order to avoid operational faults and electric shock or fire:

- When removing the power cable from the socket, always pull on the plug fixture and never on the cord.
- Do not touch the power cable with wet hands.
- Never try to repair or modify the power cable yourself.
- If the unit should emit smoke, an unusual odour or noise, switch it off immediately and unplug the power cable.

### Cables

Use only the cables supplied or recommended by your vendor in order to avoid any sort of malfunction.

## (7) FAQ

### Q: What file system should I use to format the drive?

A: This will depend on how you want to use the drive but in general, we recommend:

- Windows 2000/XP/Vista --> NTFS
- Mac OS X --> HFS+ (Mac OS Extended)
- Others and to use it on both PC and Mac --> FAT32

### Q: Can I use my device with bus power only?

A: No, an external power supply is always required.

### Q: Can I use more than one interface at the same time?

A: No, only one interface can be used at any given time.

Disconnect the previous cable before connecting the new one.