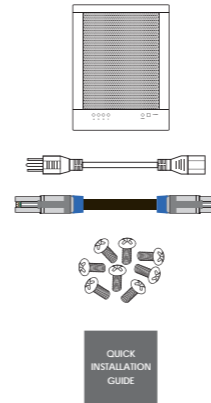




Package Contents

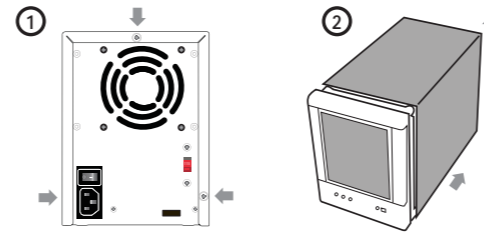
Item	Quantity
TR4X-B/TR4X	1
Power cord	1
Mini-SAS cable	1
Screws	1 set
Quick Installation Guide	1



Please contact Sans Digital in case of any missing or damaged items.

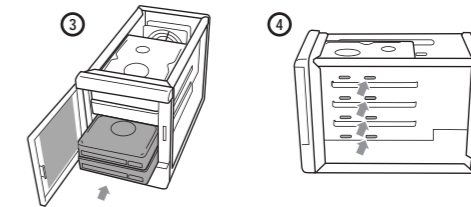
Hard Drive Installation

1. Remove the tool-less screws on the back panel.
2. Remove the upper chassis cover backwards and lift it upwards.



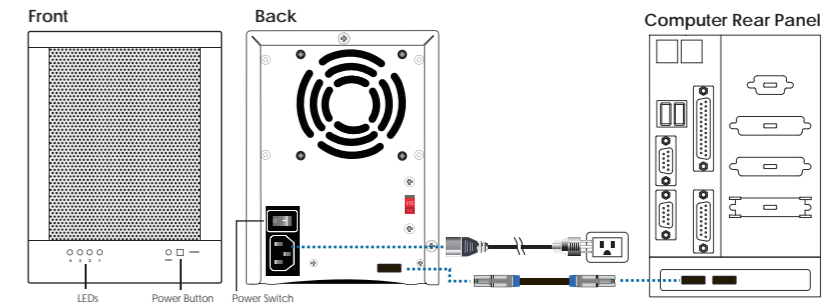
Hard Drive Installation (Continued)

3. Open the front panel and install the HDDs from the top to the bottom.
4. Fasten the tool-less screws to secure the hard drives.



5. Close the front panel and the chassis cover, and fasten the tool-less screws on the back panel.

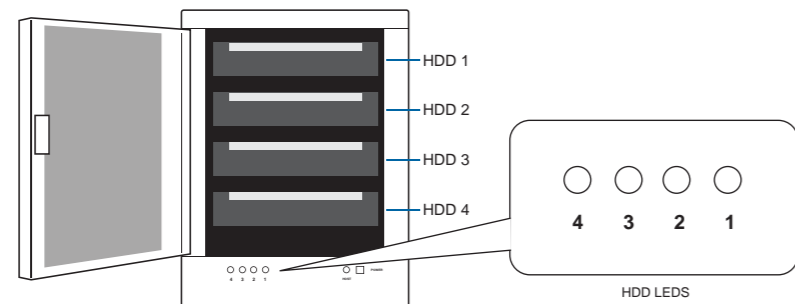
Hardware Connection Diagram



• Power ON/OFF: Switch the power button located in the back to power on/off.

LED Indicators

Hard drive data access LEDs are located on the bottom of the front panel. The LEDs flash green depending on the hard drive being accessed.



SAS/SATA Hard Drive Support

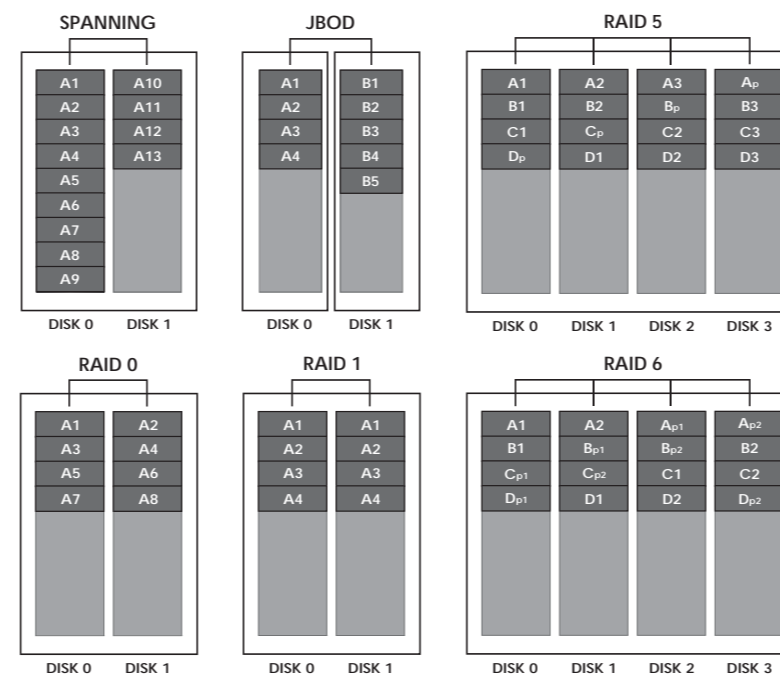
The TowerRAID SAS unit supports both SAS and SATA hard drives with SAS or SATA controllers. SAS hard drives are supported via SAS host bus adapters (HBA) or RAID controllers. SATA drives are supported via both SAS and SATA host bus adapters (HBA) or RAID controllers. No setting changes are necessary on the TowerRAID unit.

HBA & RAID Controller Card Options

Host bus adapter or RAID controller card bundle options are available. A SAS or SATA host bus adapter allows mini-SAS connection to the host computer where RAID could be setup via computer software. A RAID controller card offloads RAID calculation from computer to a dedicated RAID engines on the card, known as hardware RAID, allowing a faster performance. Please contact Sans Digital for controller card compatibility.

RAID Mode Setup and Diagrams

Please follow the instructions in the utility of the RAID card used to setup RAID. The TowerRAID unit is capable of the following RAID modes when a RAID adapter is added.



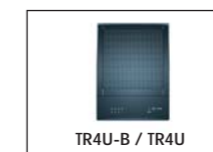
Other Sans Digital Products



- **5-Bay IDE / SATA Hard Drive Organizing Rack**
- Designed with a 4.7" cooling fan and a hollow aluminum frame for efficient heat dissipation.
- Designed with an ON/OFF power switch, which controls the power of hard drives, when a 20-pin or 24-pin ATX power supply is connected.
- Expandable to 10-bay by stacking an additional unit on top and securing it with a tool-less screw.



- **2-Bay External RAID Enclosure**
- Tray-less enclosure supporting RAID 0, RAID 1, JBOD and Spanning.
- Cable-less backplane design, supporting SATA I and SATA II HDDs.
- Easy access RAID mode switch on back panel.
- eSATA and USB 2.0 host interface.
- Ventilating protective front panel.
- Supports Windows, MAC and Linux.



- **4-Bay External RAID Enclosure**
- Access 4 hard drives while using only one cable.
- Available in USB 2.0 interface.
- Cable-less backplane design, supporting SATA I and SATA II HDDs.
- Supports Windows, Linux, and MAC OS X.
- Cable-less, tray-free design with dust cover.
- Available in black and silver finish.



- **8-Bay External RAID Enclosure**
- Two eSATA cables supporting up to 8 hard drives using Port Multiplier.
- Creates two sets of RAID 0, 1, 1+0 and 5 with spare supported via software utilities.
- Cable-less backplane design, supporting SATA I and SATA II HDDs.
- Bundled with 2-port PCIe 1x eSATA card.
- Supports Windows, MAC and Linux.

T: 1.800.980.1988 F: 1.626.322.3878 E: INFO@SANSDIGITAL.COM W: WWW.SANSDIGITAL.COM