

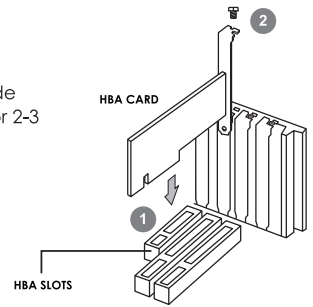
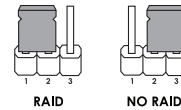
## 2ESPCIE2 | 4ESPCIX2 | INFPCIX2

### QUICK INSTALLATION GUIDE v1.0

## ADAPTER INSTALLATION

### Step 1

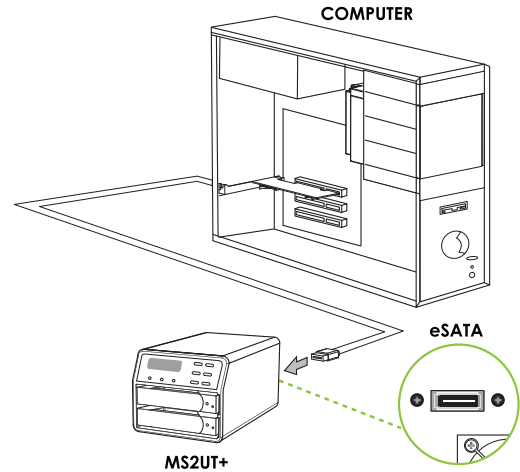
Set the adapter to the desired RAID mode by placing the jumper in the 1-2 (RAID) or 2-3 (NO RAID) position.



### Step 2

Insert the PCIe Card into an available PCIe slot on your computer (Step 1) and secure with screw (Step 2).

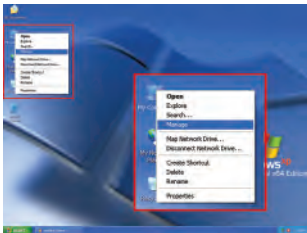
## INTERFACE DIAGRAM



## WINDOWS SYSTEM INSTALLATION

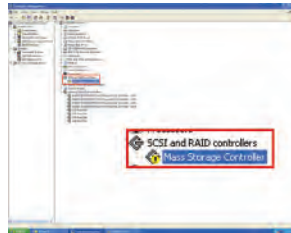
### Step 1

From the Desktop, right click on My Computer and select "Manager".



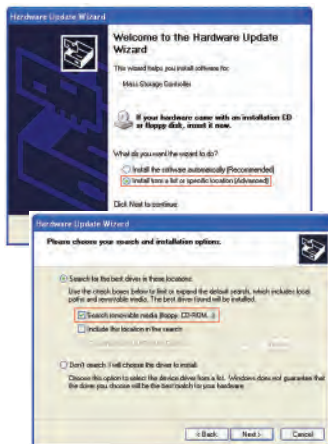
### Step 2

Select "Mass Storage Controller".



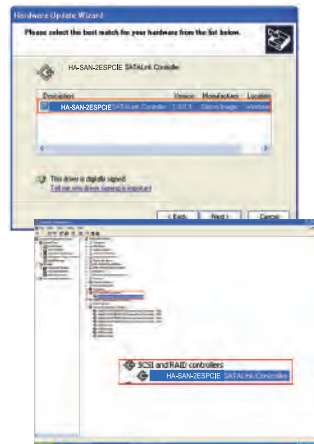
### Step 3

Select "Manual Setup (Recommended selection)", and specify the search of drive from CD-ROM.



### Step 4

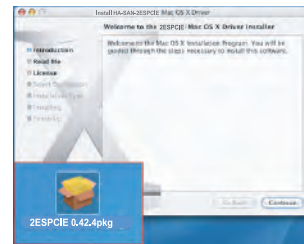
Select the specified driver and start the installation process.



## MAC SYSTEM INSTALLATION

### Step 1

Select the driver icon to start the installation process.



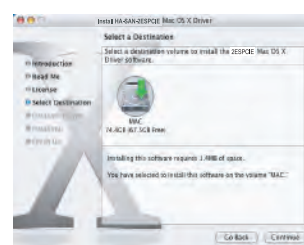
### Step 2

Please read the contents of the agreenebtm abd select "Agree".



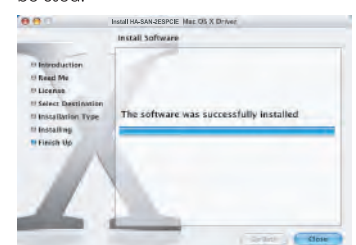
### Step 3

Select the Hard Drive location for the driver, and click "Continue".



### Step 4

Please wait until the installation is complete. The adapter is now ready to be used.



## PACKAGE CONTENTS

