

# EliteSTOR **ES104TI** & MobileSTOR **MS4TI**



**SANS**  
**DIGITAL**<sup>®</sup>

DETAILED USER'S MANUAL v1.0

# Forewords

## **About this manual**

Thank you for using products from Sans Digital.

This manual will introduce the Sans Digital SAS Series products. Before using Sans Digital SAS Series products, you are advised to read this manual first. All information contained in this manual has been carefully confirmed before printing, but the actual product specifications will be in accordance with those at the time of delivery; any update to product specifications or relevant information may be found on [www.sansdigital.com](http://www.sansdigital.com), and no advance notification will be made.

If you have any question regarding the products of Sans Digital, or you would like the latest product information, please contact us at [support@sansdigital.com](mailto:support@sansdigital.com), and we shall give you a reply as soon as possible.

Copyright © Sans Digital All rights reserved.

# Index

<b>Chapter 1</b>	<b>Product Introduction</b> . . . . .	<b>4</b>
1.1.	Product Features . . . . .	4
1.2.	Introduction to the Hardware . . . . .	4
<b>Chapter 2</b>	<b>Installation</b> . . . . .	<b>7</b>
2.1.	Accessories . . . . .	7
2.2.	Hardware Installation . . . . .	7
2.3.	Formatting the Hard Drive . . . . .	8

# Chapter 1 Product Introduction

MS4TI / ES104TI systems utilize SAS (Serial Attached SCSI) technology to enable support of both SAS and SATA hard drives. With this unit, you will be able to benefit from the high system performance of SAS hard drives; or cost-effective storage when using SATA hard drives. The systems are also equipped with a removable hard drive tray that is compatible with many other Sans Digital product series that will bring convenience and efficiency when data sharing or interchange is required.

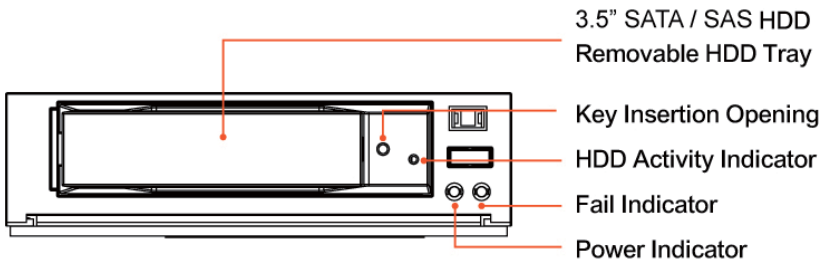
## 1.1. Product Features

- Support both SAS and SATA hard drives in the same enclosure
- Hotswappable hard drives
- SAS 4x (SFF-8470) MultiLane Infiniband cable support for SAS HBA

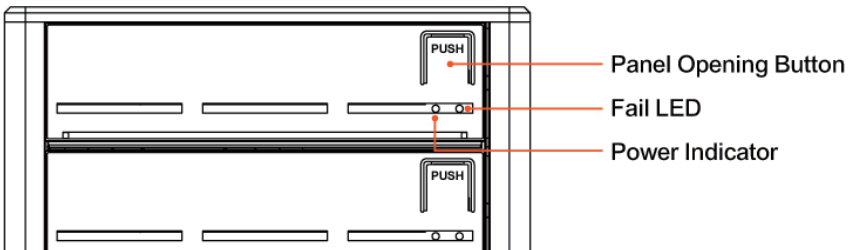
## 1.2. Introduction to the Hardware

### 1.2.1 MS4TI

Tray Module Front View



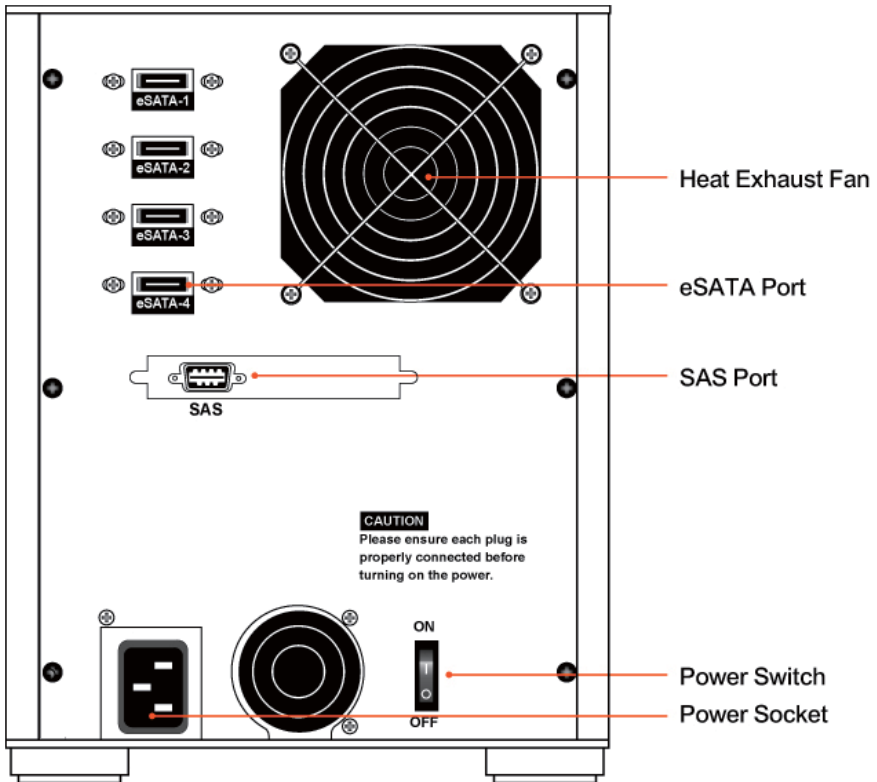
Front view



LED Indicator Definitions:

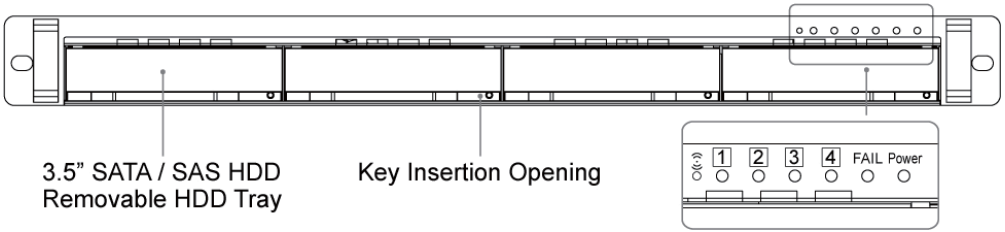
1. When the system power is turned on, the POWER INDICATOR displays green.
2. When the FAIL INDICATOR displays red, this could mean either the heat exhaust fan has malfunctioned or the device temperature has exceeded 55°C.

Rear view



## 1.2.2 ES104TI

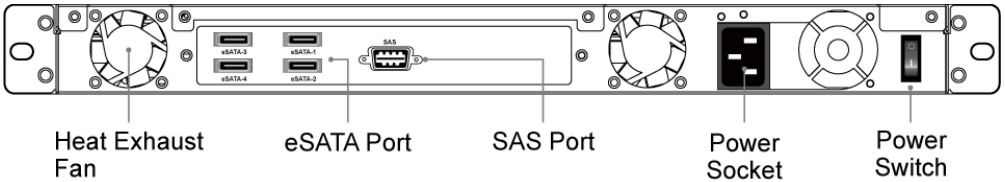
Front view



LED Indicator Definitions:

1. When the system power is turned on, the POWER INDICATOR displays green.
2. When the FAIL INDICATOR displays red, this could mean either the heat exhaust fan has malfunctioned or the device temperature has exceeded 55°C. At the same time, the buzzer will be on.
3. When the HDD ACTIVITY INDICATOR flashes, the hard drive is being accessed.

Rear view



# Chapter 2 Installation

## 2.1. Accessories

The following accessories should be included in the product package:

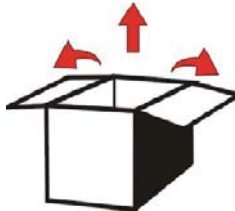
- MS4TI / ES104TI main unit
- CD (product datasheet, user manual, etc.)
- Quick Start Guide Manual
- Spare Parts Pack (including screws and plastic key)

Should any of the above accessories be missing, or if the main unit is damaged prior to initial use, please contact us [www.sansdigital.com](http://www.sansdigital.com) or [support@sansdigital.com](mailto:support@sansdigital.com).

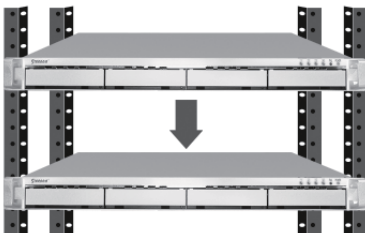
After confirming that all hardware contents and accessories are intact, please follow the procedures below to complete the hardware installation.

## 2.2. Hardware Installation

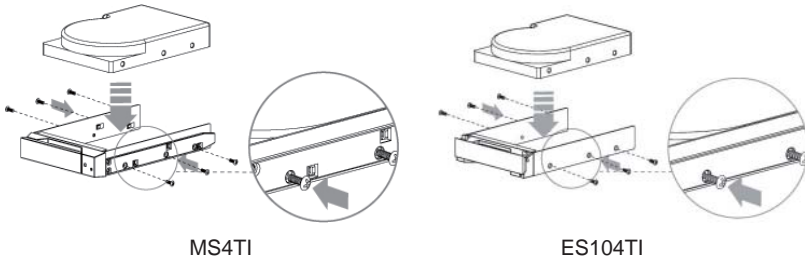
Step 1 Open the package and retrieve the main unit. (Please check whether the associated accessories and product itself is damaged or missing, and contact us [www.sansdigital.com](http://www.sansdigital.com) or [support@sansdigital.com](mailto:support@sansdigital.com) if you have any problems.)



Step 2 Mount the product to a stable surface or a rack. Make sure that the fan is not blocked and there is appropriate space around for heat dissipation. (Do not place the product around environments where it may cause damage to the product. Do not place product near water.)



Step 3 Take out the removable tray and mount your HDD to the tray with screws securely fastened to avoid damages to the HDD from unnecessary movements.



Step 4 Connect the eSATA/Multilane cables to the connectors. Connect the power cord and flip the power switch to power up the system.

You are now complete the hardware installation.

### 2.3. Formatting the Hard Drive

After the hardware is successfully installed, you must first format the hard drive(s) before storing any data into it. For Windows users, please follow the steps below to format the hard drive(s). Below is a demonstration using four 3.5" SAS or 3.5" SATA HDDs.

Step 1 After the computer has properly booted up, go to "Device Manager". You will be able to see your newly installed hard drive.

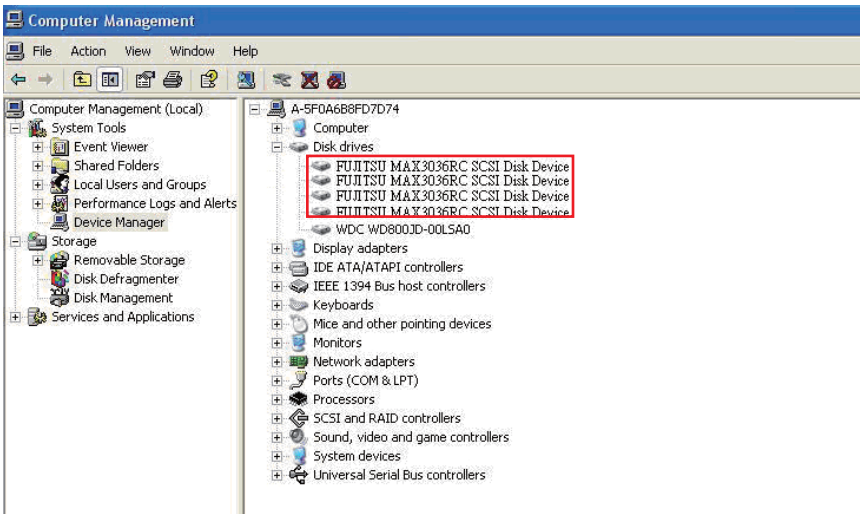


Diagram shows that the Device Manager has found the newly installed SAS HDDs

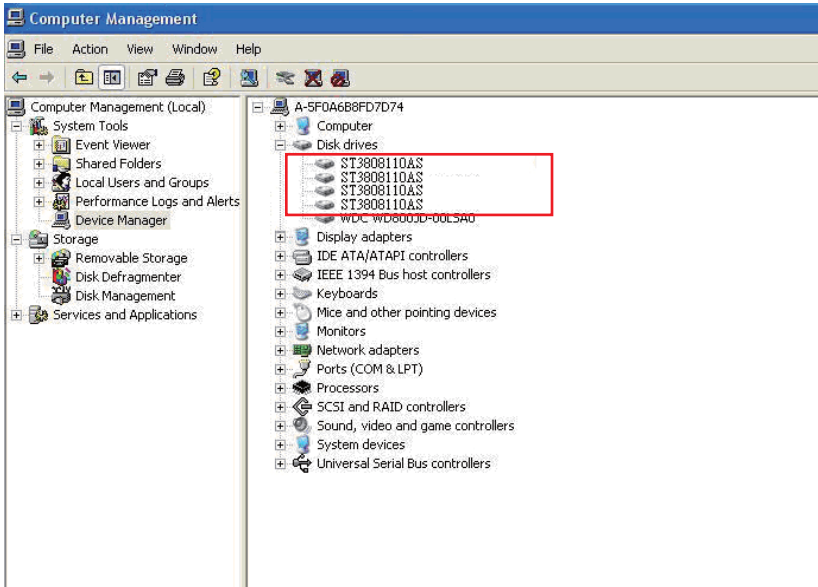


Diagram shows that the Device Manager has found the newly installed SATA HDDs

Step 2 Go to “Disk Management” and select the newly installed hard drive. First you’ll need to “Initialize” the hard drive and “Format” the disk according to your setting. After the hard drive has been successfully formatted, you may then begin to use the newly installed hard drive.