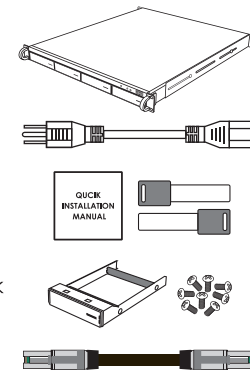




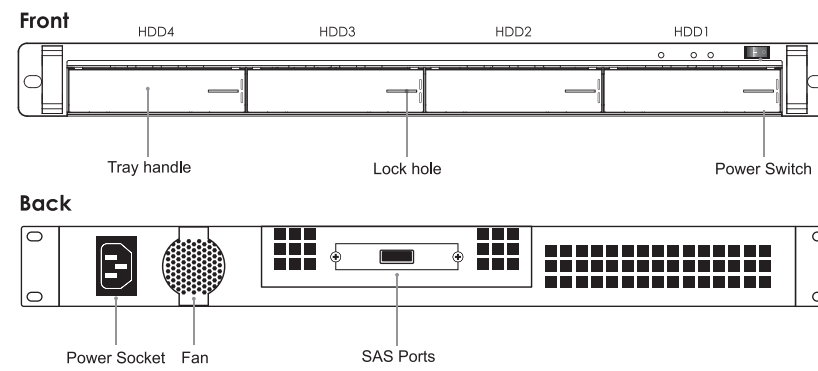
**Package Contents**

ES104X+(B) .....	1
Power Cord .....	1
Manual .....	1
Hard Drive Tray Key .....	1
Removable Tray Modules (Screws Included) .....	4
Screws .....	1 pack
mini-SAS Cable .....	1

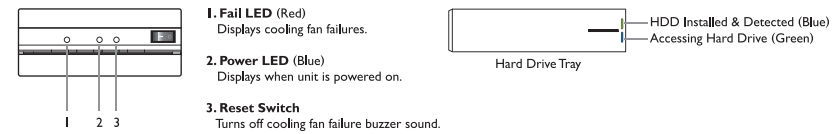
(Please contact Sans Digital in case of missing or damaged items)



**Hardware Diagrams**

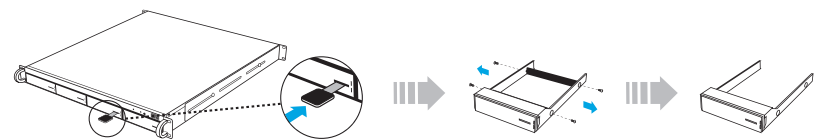


**LED Indicators**

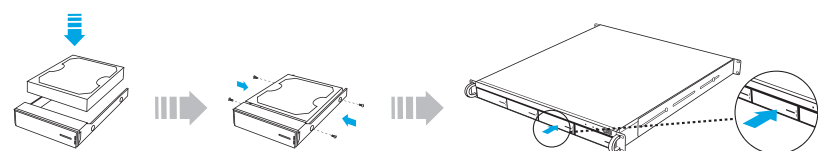


**Installing a Hard Drive in the Removable Tray**

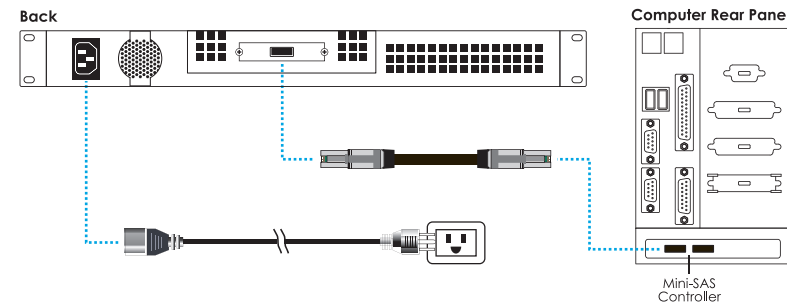
1. Press the key (included in the package) into the lock slot located at the front of the hard drive tray until the tray handle unlocks.
2. Pull on the tray handle to remove the tray from the enclosure.
3. Dismount the plastic tray protector rods by removing the screws on the sides of the tray.



4. Place the hard drive in the tray, and fasten it with the screws (included in the package) in corresponding locations.
5. Place the tray back into the enclosure and lock the tray by pushing in the tray handle.



**Connecting the ES104X+(B) to the Computer**



**Other Sans Digital Products**



- 2U 8-Bay Intel Xeon Hardware RAID 6 NAS + iSCSI Rackmount
- Hardware RAID 0, 1, 1+0, 5 and 6 with spare.
- Intel Xeon E3110 3.0 GHz CPU and 2GB DDR2 ECC memory.
- Unified storage; simultaneously supports iSCSI IP SAN and NAS.
- Built-in Folder Replication and Snapshot for multi-level data fault tolerance.
- Dual Gigabit Ethernet.



- 3U 16-Bay SAS/SATA to SAS JBOD Rackmount w/ SAS Expander
- 3U 16-bay SAS to SAS/SATA modularized JBOD rackmount.
- Supports RAID cards from 3ware, Adaptec, LSI, Intel and Areca.
- SAS expander technology supporting up to 4 enclosures, or 64 hard drives.
- Supports both SAS or SATA hard drives.
- Cable-less backplane and controller module.

T: 1.800.980.1988 F: 1.562.949.3328 E: INFO@SANSDIGITAL.COM W: WWW.SANSDIGITAL.COM