

AccuSTOR and MobileStor Series

How to Assign Drive Slots to a Mini-SAS Channel (Zoning)

Overview: The purpose of this guide is to create a dedicated group of hard drive slots to a specific mini-SAS channel on the Sans Digital AccuSTOR Series and MobileSTOR Series.

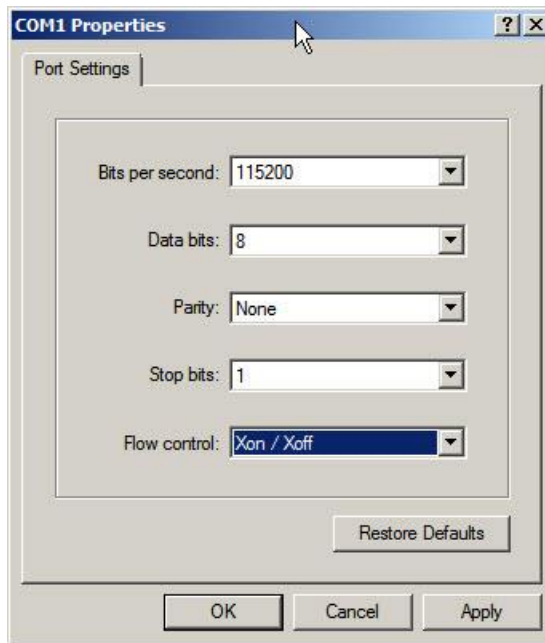
Step One:

Download and install "Hyper terminal" and connect a "Serial port to RJ11" cable from your PC to your unit's terminal port.

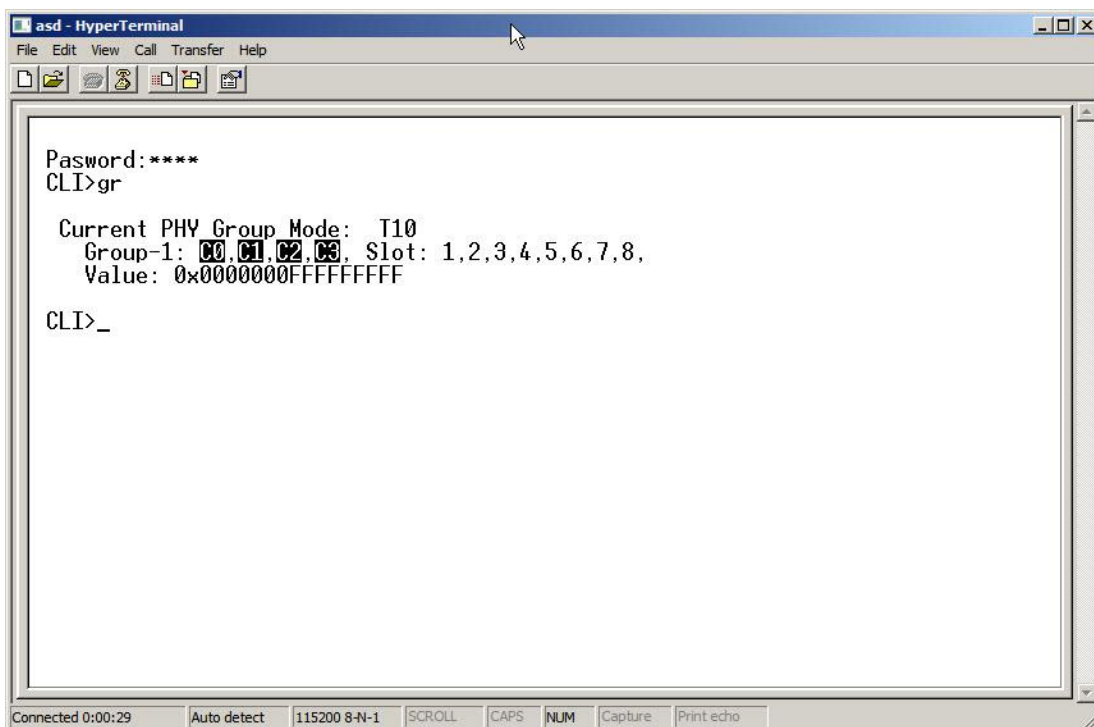


Step 2: Step two:

Run the Hyper Terminal program with the following settings.



Step 3: After logging in, press "Enter" and you will be asked to type in a password (default password is "000"). Type "gr" to view the current physical grouping. The default grouping is the mini-SAS Channel 0,1,2,3 is associated with all hard drive, in below example, Slot#1, 2, 3, 4, 5, 6, 7, and 8. This means that all the mini-SAS ports on the will be able to detect all hard drives.



Step 4: To assign a set of hard drive slots to a specific channel, you will need to type the following commands. Make sure to type in "st" to save the new settings.

Example 1.1: Hard drive slots #1 to #4 will be only seen on mini-SAS channel 0.

```
CLI> gr dev 1 c0 1 4
```

```
CLI>
Pasword:****
CLI>gr dev 1 c0 1 4

New PHY Group Mode: T10
Group-1: C0, Slot: 1,2,3,4,
Value: 0x000000000F0000F

Current PHY Group Mode: T10
Group-1: C0,C1,C2,C3, Slot: 1,2,3,4,5,6,7,8,
Value: 0x0000000FFFFFFFFF

CLI>_
```

Example 1.2: Hard drive slots #5 to #8 will be only seen on mini-SAS channel 1.

```
CLI> gr dev 2 c1 5 8
```

```
CLI>st
All Of The User Configurations are Saved.

CLI>gr dev 2 c1 5 8

New PHY Group Mode: T10
Group-1: C0, Slot: 1,2,3,4,
Value: 0x000000000F0000F
Group-2: C1, Slot: 5,6,7,8,
Value: 0x000000000F00F00

Current PHY Group Mode: T10
Group-1: C0, Slot: 1,2,3,4,
Value: 0x000000000F0000F
Group-2: C1, Slot:
Value: 0x0000000FFFFFFFFF

CLI>_
```

Step 5: After saving the configurations you will receive a message "All of The User Configurations are Saved". Power cycle the unit, log back in to hyper terminal, type in "gr" and you new configurations should look like this.

```
d - HyperTerminal
File Edit View Call Transfer Help
[Icons]

Password:****
CLI>gr

Current PHY Group Mode: T10
Group-1: 00, Slot: 1,2,3,4,
Value: 0x00000000F0000F
Group-2: 01, Slot: 5,6,7,8,
Value: 0x00000000F00F00

CLI>_

Connected 0:00:09 Auto detect 115200 8-N-1 SCROLL CAPS NUM Capture Print echo
```