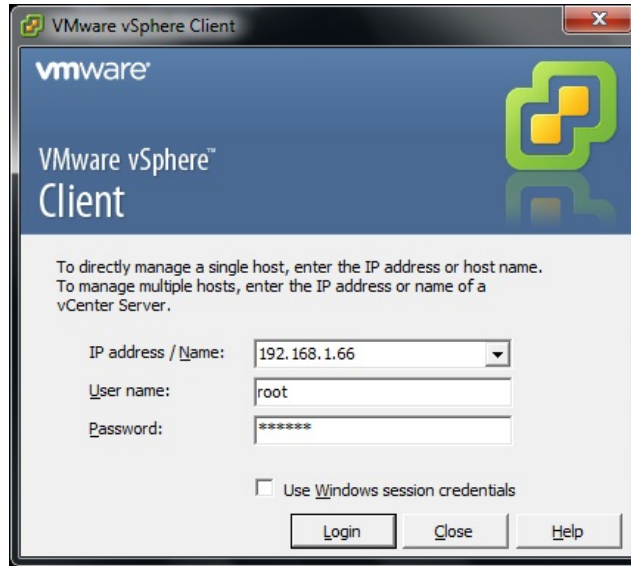


# Sans Digital iSCSI Product

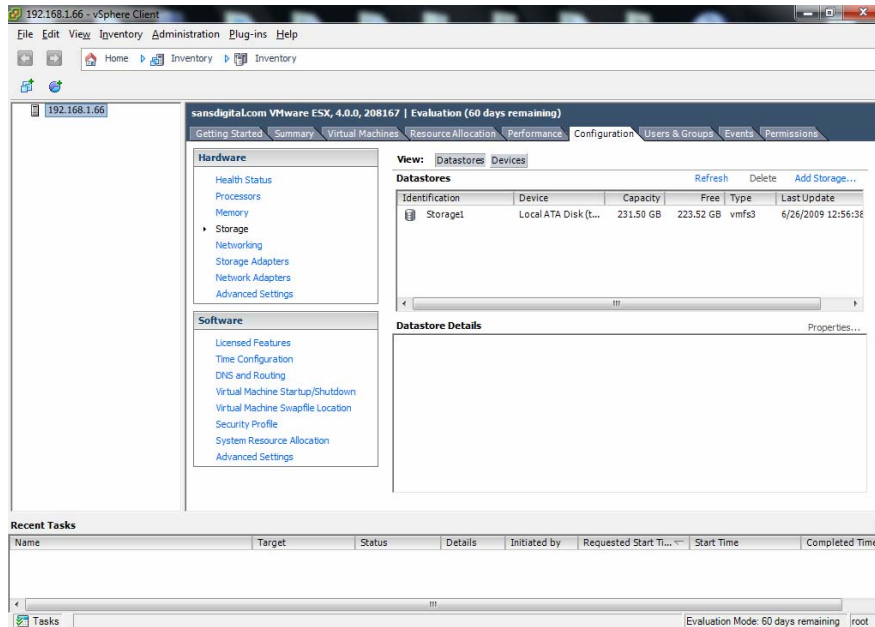
VMware Vsphere 4.0 Step-by-Step  
Installation Guide

Version 1.1

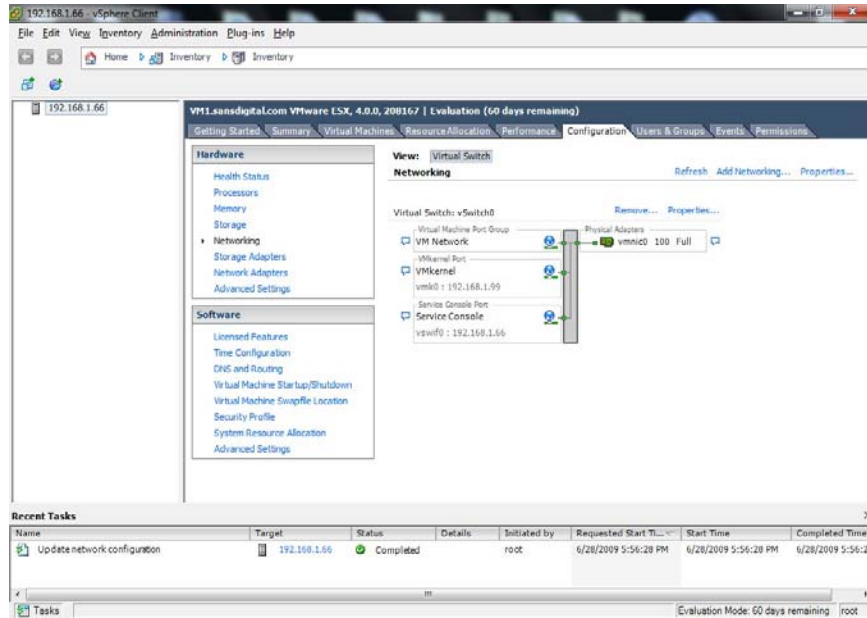
**Step 1** - Login into VMware server using the VMware Sphere client.



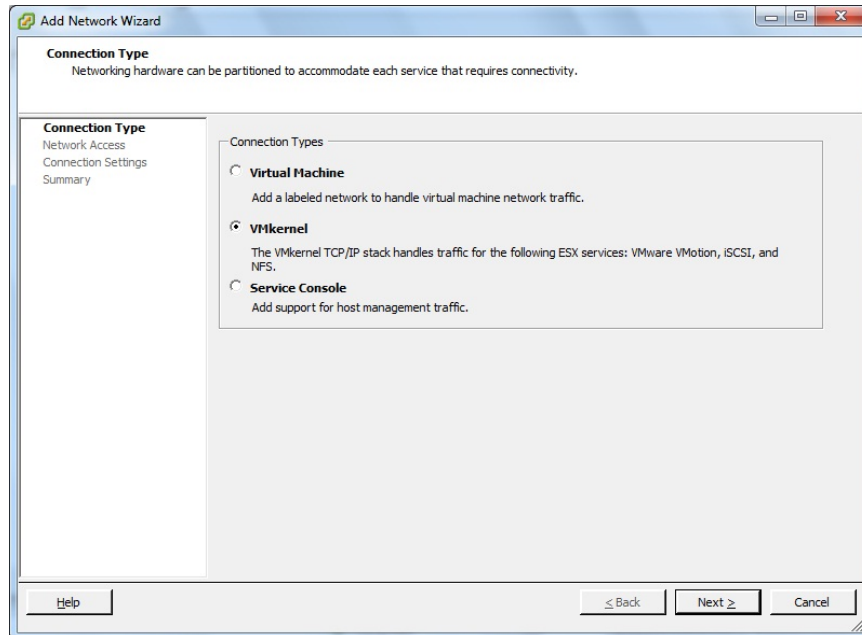
Once logged in, click "Configuration", "Storage", and you will be able to see what disk space is currently utilized by VMware. In the example shown below, there is one local drive attached to the VMware server motherboard with the capacity of 223GB.



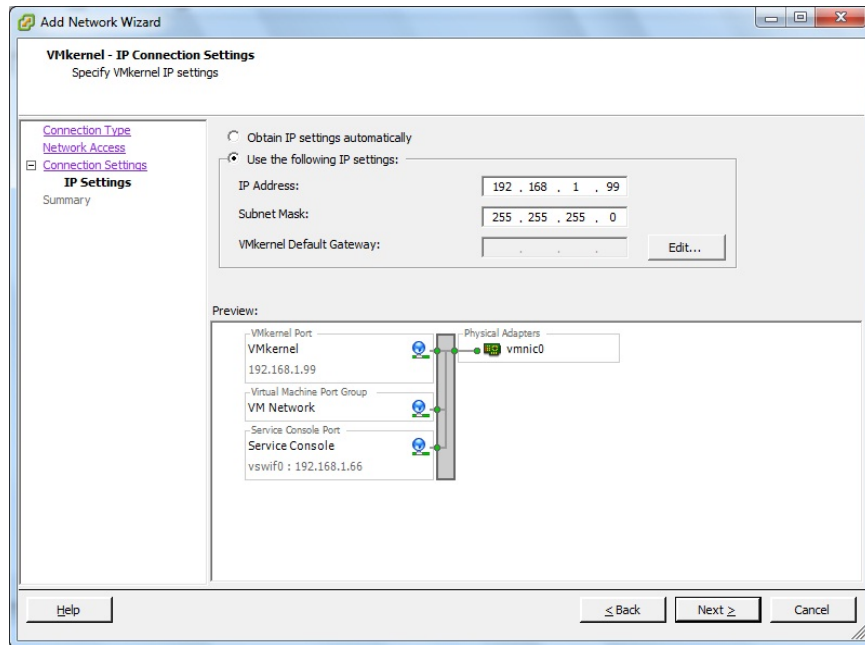
Step 2 - Go to "Configuration" and click "Add Networking".



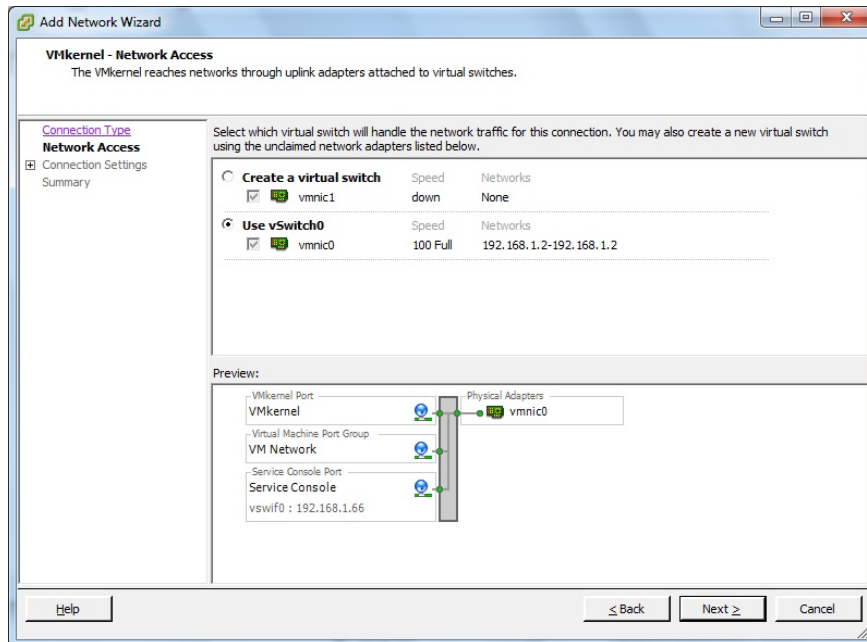
a) Select VMkernel and click next.



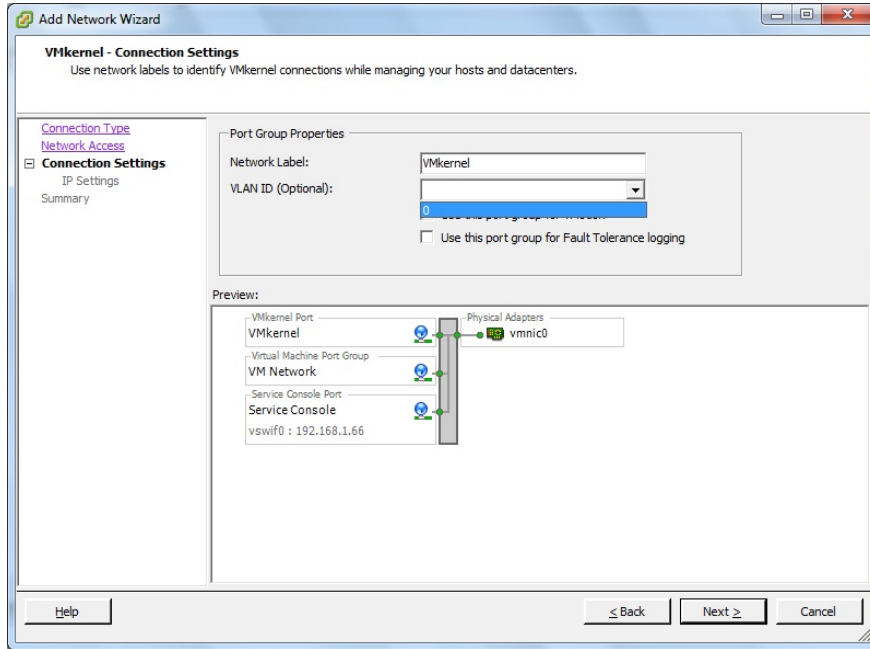
b) Input the IP address, subnet mask and gateway for the VMkernel.



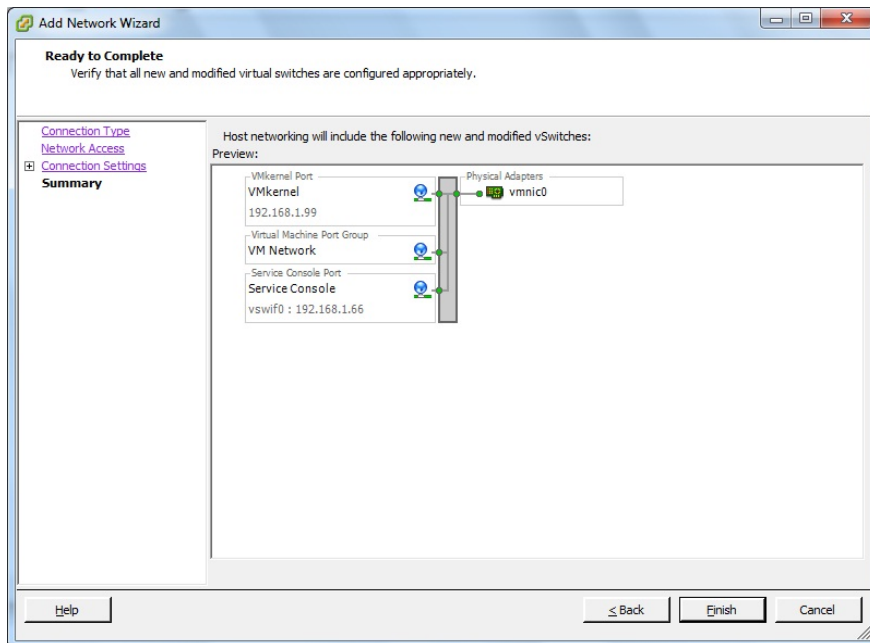
c) Select the Vswitch that you want to use.



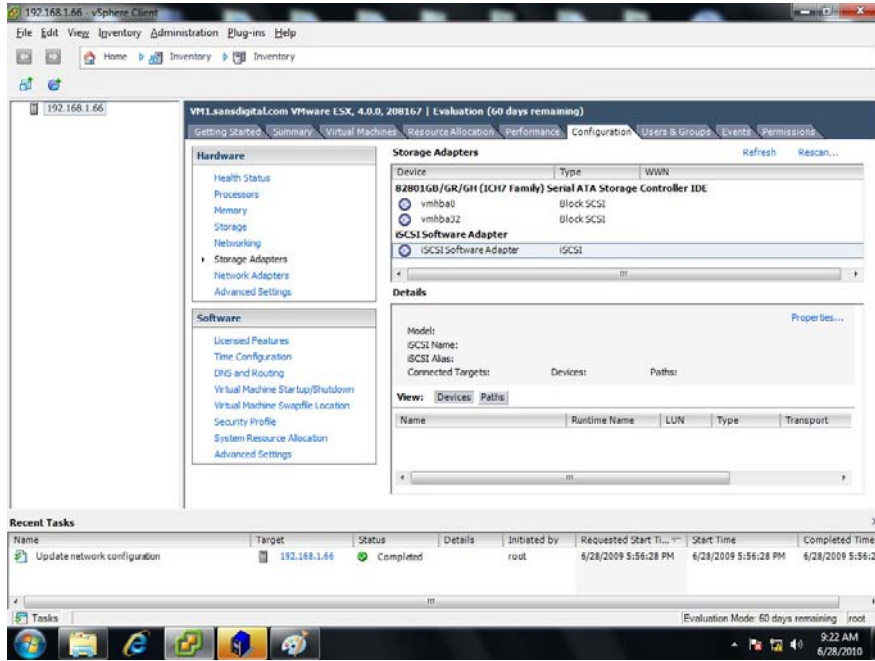
d) Select the VLAN ID and click "Next".



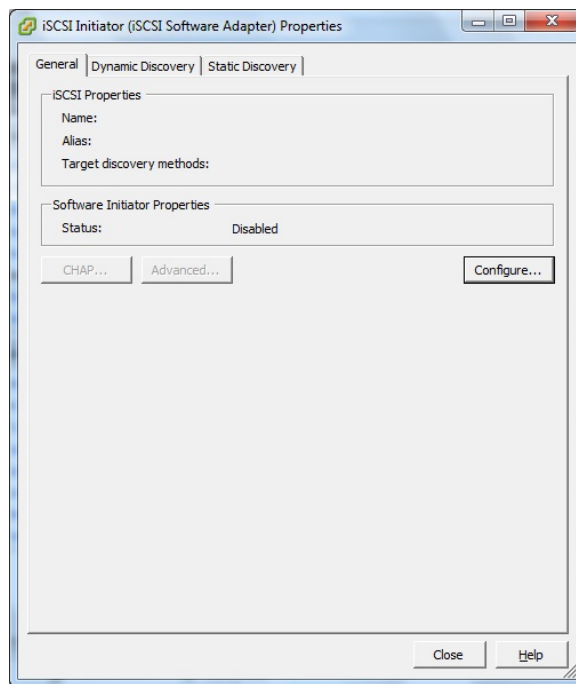
e) Click finish. You have completed installing the VMkernel.



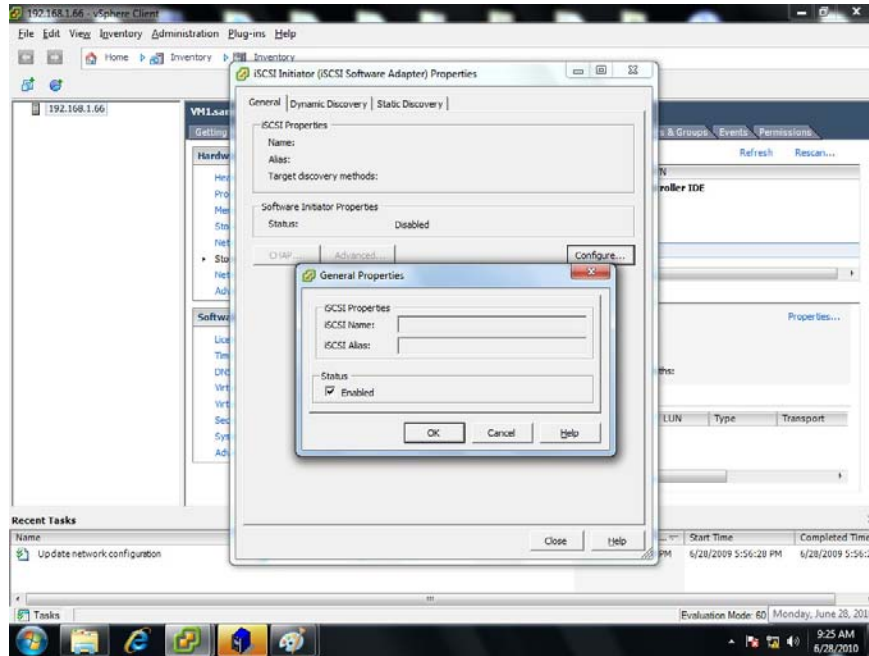
**Step 3** - Go to "Configuration", "Storage Adapter", then select the "iSCSI Software Initiator" and click on "Properties".



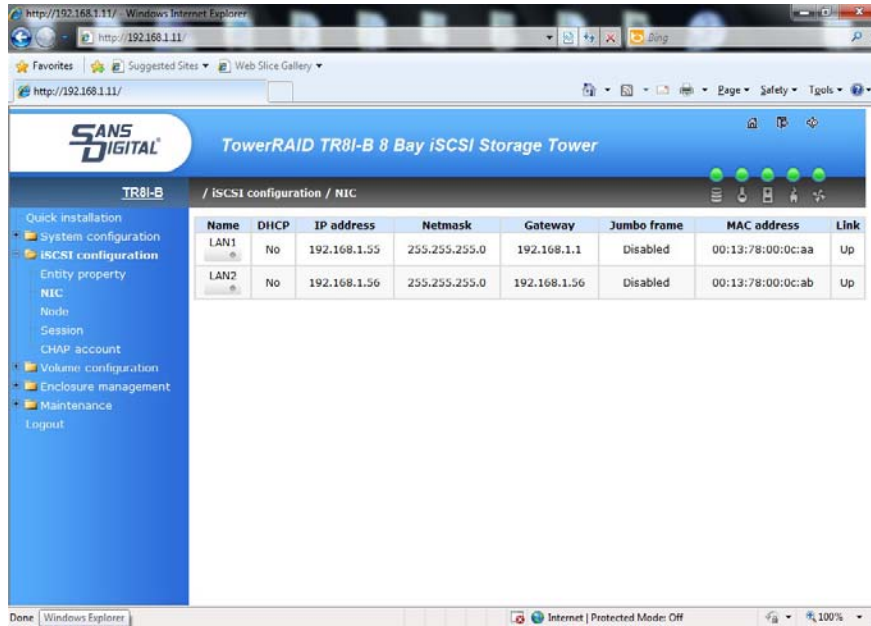
a) On the "General" tab of the iSCSI Initiator Software Adapter Property, click "Configure".



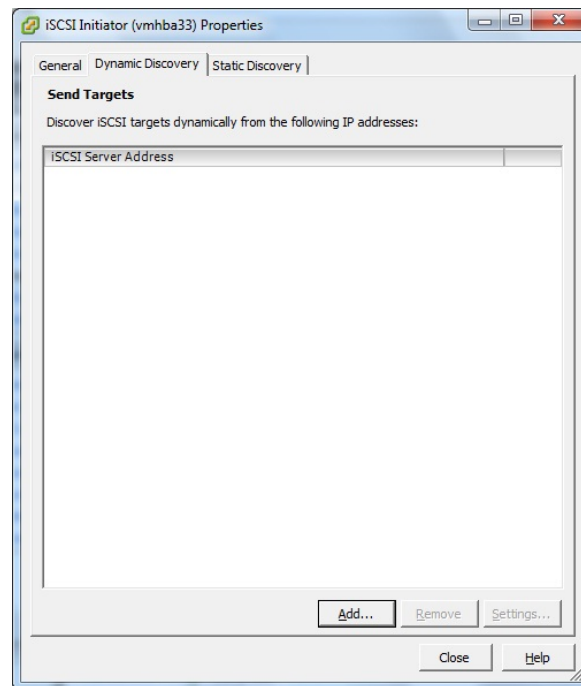
b) Enable the iSCSI by selecting the checkbox on “Status (Enabled)” and click “OK”.



c) Locate the IP address for the Sans Digital iSCSI target ports. For example, Sans Digital TR8i has two ports each configured with its own IP address.

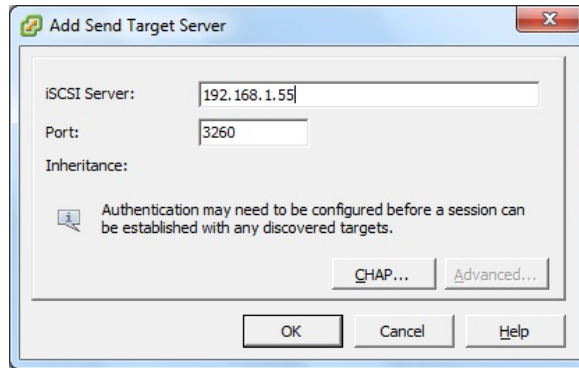


d) Select "Dynamic Discovery" and click "Add".

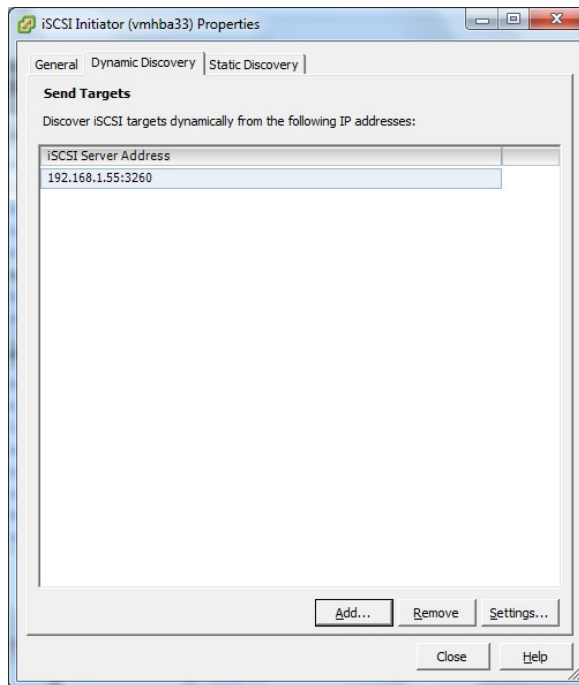


e) Add the first IP Address of the iSCSI target and click "OK".

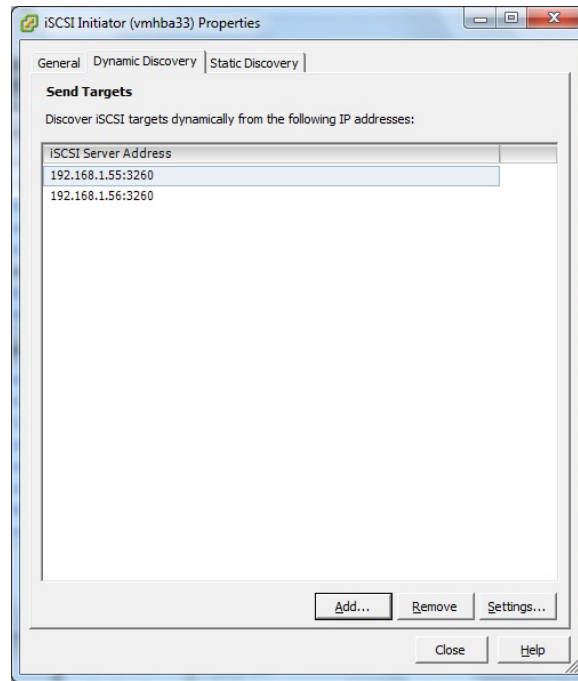




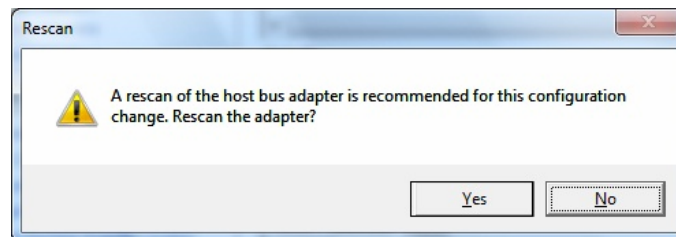
f) Add the second iSCSI target IP address (optional).



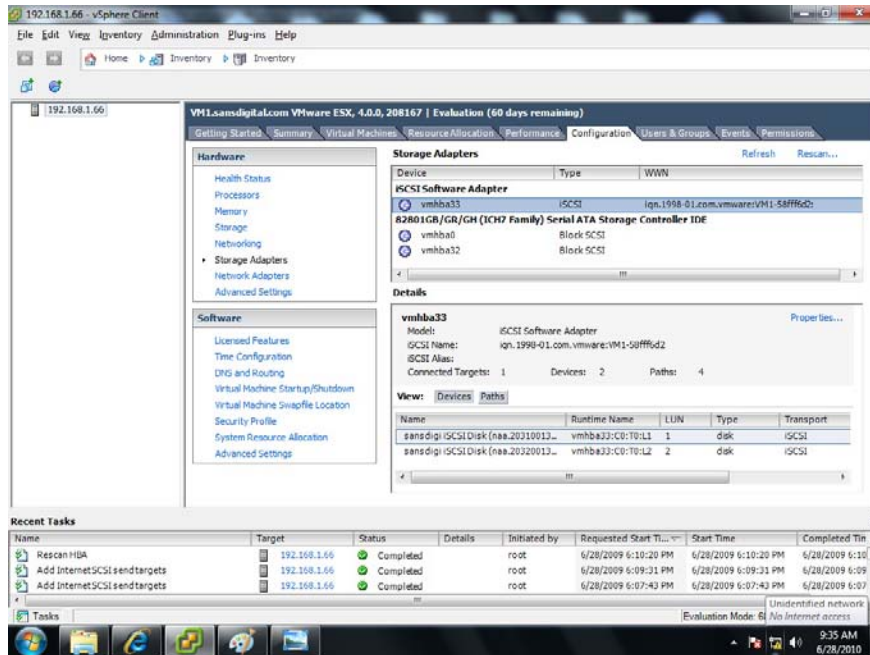
Example shown below with both IP addresses of the iSCSI target added from the Sans Digital TR8i.



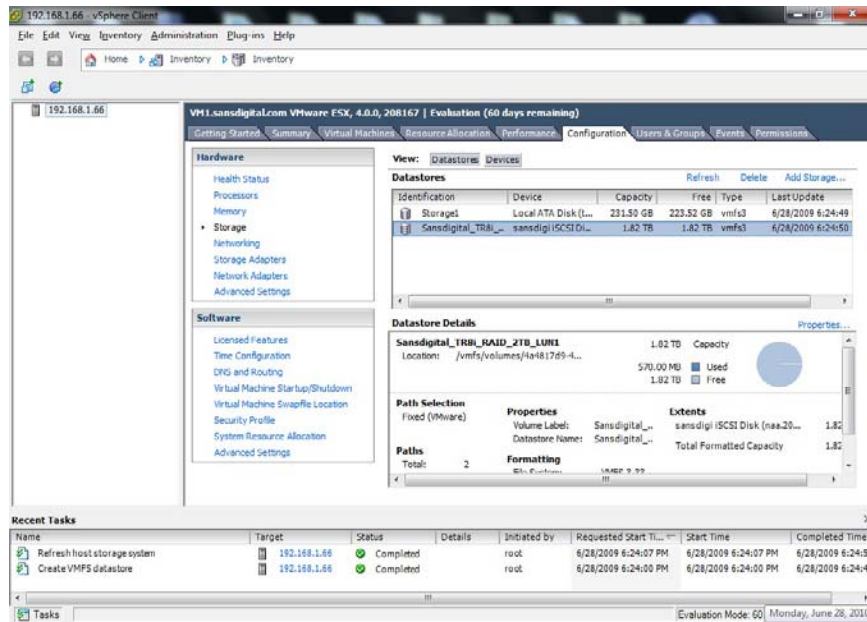
g) When prompted for a rescan of the host bus adapter, click "Yes".



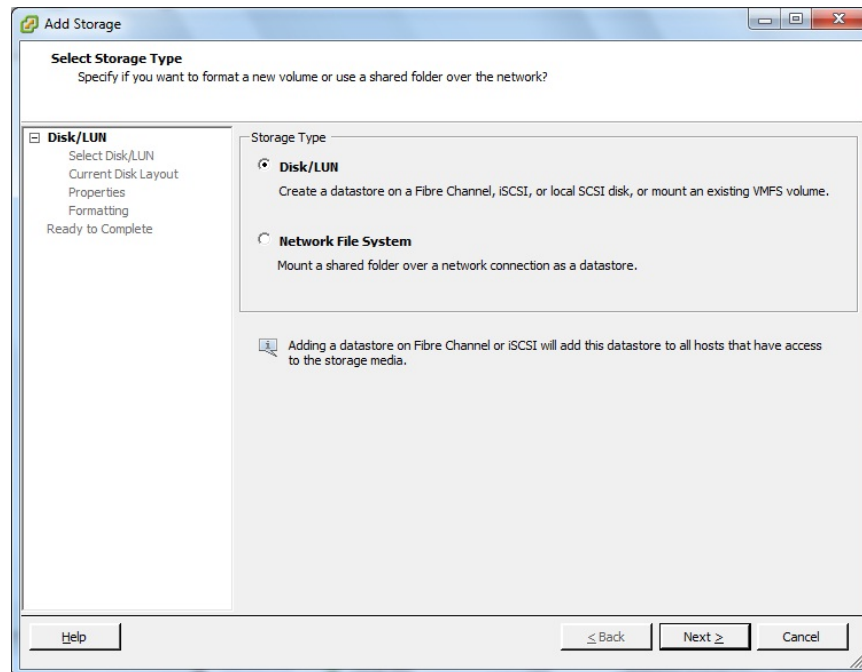
**Step 4** - Go to "Configuration" and select "Storage Adapter". Select the iSCSI adapter, both instance of iSCSI IP address and LUN information will be shown, which means you have successfully installed the iSCSI storage devices.



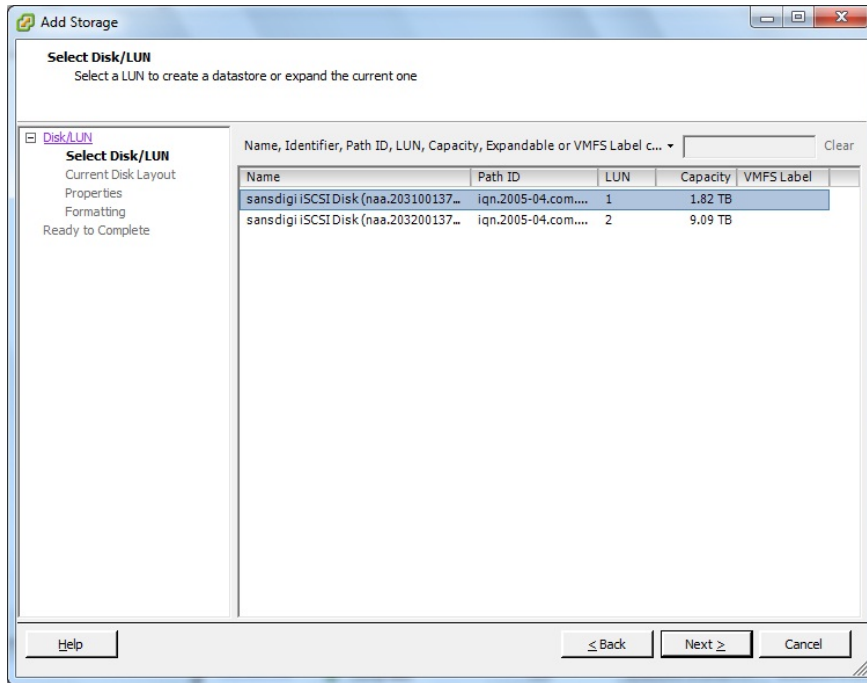
a) Go go "Configuraiton" and "Storage" tab. High-lighted the Sansdigital\_TR8i\_iSCSI device and click "Add Storage".



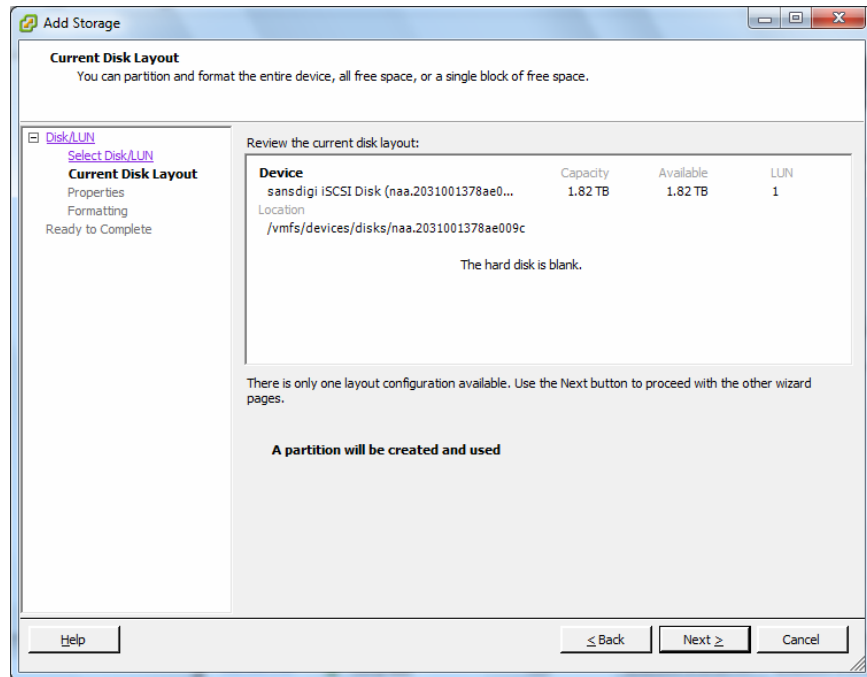
b) For the "Storage Type" selection, choose "Disk/LUN for iSCSI" and click "Next".



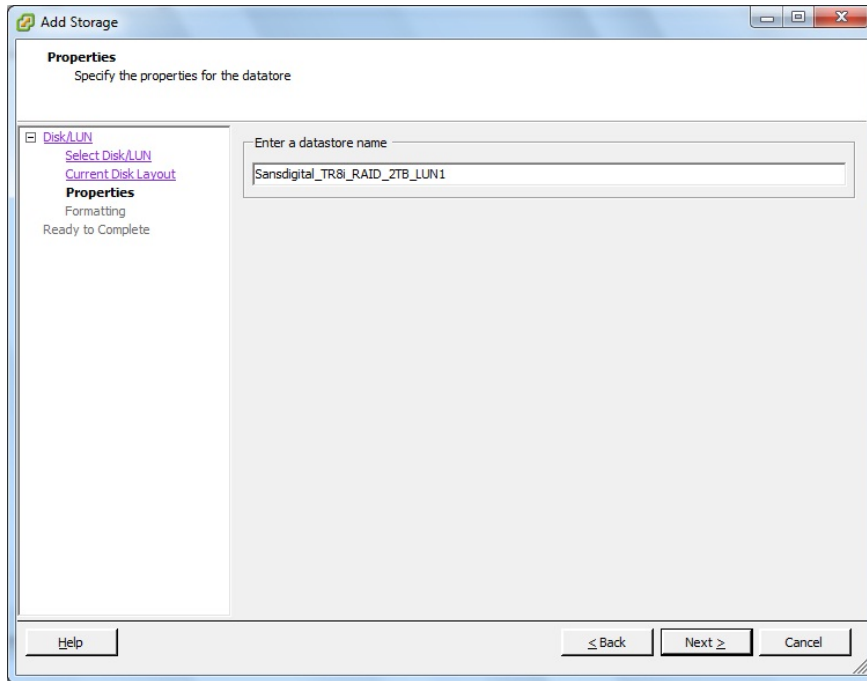
c) Select the iSCSI target that you wish to add as storage for your VMware operating system and click next.



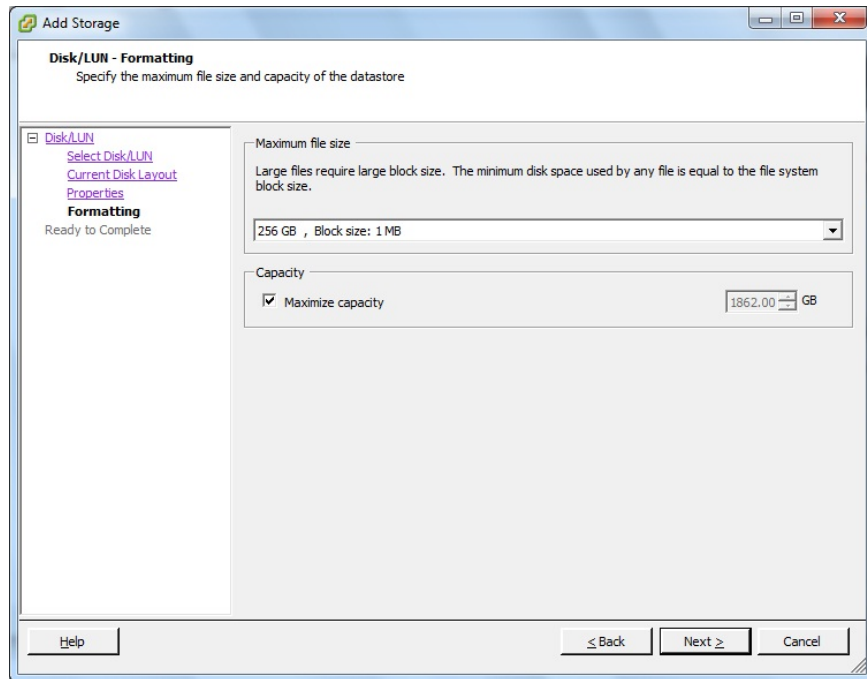
d) The proper disk size for the iSCSI Target/LUN selected should be displayed.



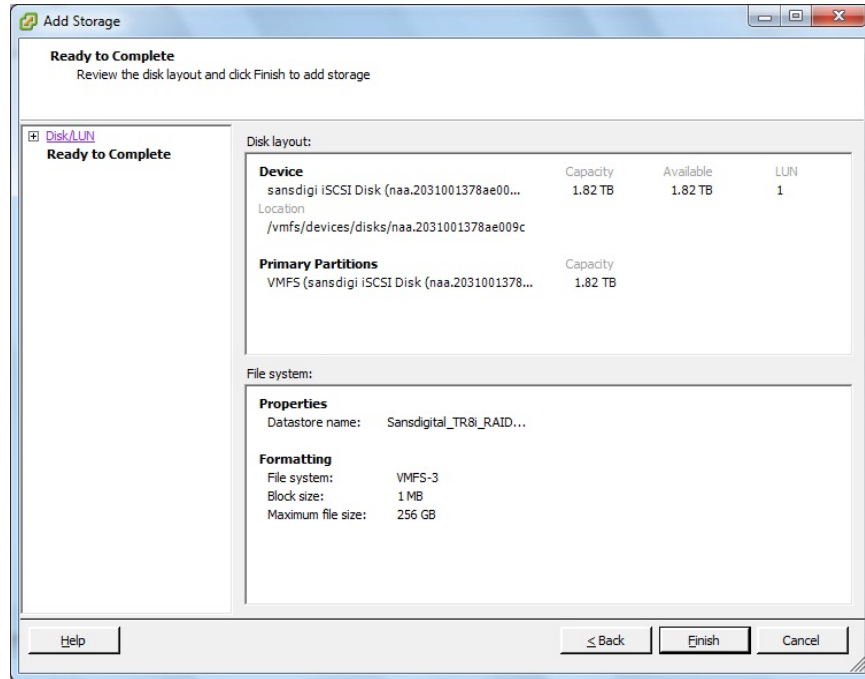
e) Enter a proper datastore name for the iSCSI target and click "Next".



f) Select the maximum Disk/LUN Size and then click "Next".



g) Click "Finish" to complete the iSCSI Storage installation.



**Step 5** - Congratulations, you have successfully installed the iSCSI disk device to the VMware. To see iSCSI disk detail, click configuration and storage. You should now be able to see the original hard disk installed and the new iSCSI drive that has just been added.

